

WAAS CH <b>81836</b> <b>W05A</b>	APP CRS <b>054°</b>	Rwy Idg TDZE <b>255</b> Apt Elev <b>270</b>
----------------------------------------	------------------------	---------------------------------------------------

RNAV (GPS) RWY 5

COLUMBIA/MARION COUNTY (ØRØ)

RNP APCH - GPS.

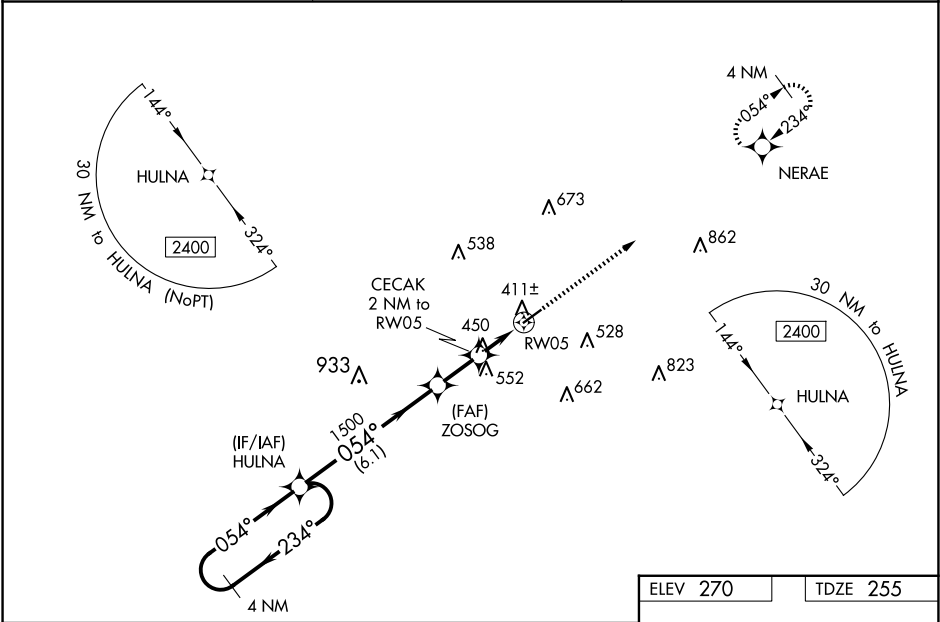
▼

NA

For uncompensated Baro-VNAV systems, LNAV/VNAV NA below -15°C or above 54°C.  
When local altimeter setting not received, use Hattiesburgh/Laurel Rgnl altimeter setting and increase all DA 66 feet and all MDA 80 feet; increase LPV all Cats visibility ½ mile and LNAV/VNAV all Cats and Circling Cat C visibilities ¼ mile, increase Circling Cat D visibility ½ mile, increase LNAV Cat C and D visibility ¾ mile. VDP and Baro-VNAV NA when using Hattiesburgh/Laurel Rgnl altimeter setting. Rwy 5 helicopter visibility reduction below ¾ SM NA.

MISSED APPROACH:  
Climb to 2400 direct  
NERAE and hold.

AWOS-3PT <b>120.675</b>	HOUSTON CENTER <b>126.8 327.8</b>	UNICOM <b>122.8 (CTAF)Ø</b>
----------------------------	--------------------------------------	--------------------------------



4 NM Holding Pattern

HULNA

2400

234°

054°

054°

1500

ZOSOG

CECAK 2 NM to RW05

\*1.5 NM to RW05

RW05

2400

NERAE

\*LNAV only.

GP 3.00° TCH 40

6.1 NM

1.8 NM

0.5 NM

1.5 NM

CATEGORY	A	B	C	D
LPV DA	505-7 <sup>5</sup> / <sub>8</sub> 250 (300-7 <sup>5</sup> / <sub>8</sub> )			
LNAV/VNAV DA	743-1 <sup>5</sup> / <sub>8</sub> 488 (500-1 <sup>5</sup> / <sub>8</sub> )			
LNAV MDA	760-1 505 (500-1)	760-1 <sup>3</sup> / <sub>8</sub> 505 (500-1 <sup>3</sup> / <sub>8</sub> )		
CIRCLING	760-1 490 (500-1)	820-1 550 (600-1)	920-1 <sup>3</sup> / <sub>4</sub> 650 (700-1 <sup>3</sup> / <sub>4</sub> )	1000-2 <sup>1</sup> / <sub>4</sub> 730 (800-2 <sup>1</sup> / <sub>4</sub> )

ELEV 270

TDZE 255

REIL Rwy 5 and 23Ø

MIRL Rwy 5-23 Ø

SC-4, 07 AUG 2025 to 04 SEP 2025

SC-4, 07 AUG 2025 to 04 SEP 2025