

WAAS CH 63232 W28A	APP CRS 279°	Rwy Idg TDZE 1162 Apt Elev 1182	5005 1162 1182
--	------------------------	---	---

RNAV (GPS) RWY 28

MOUNTAIN VIEW (MNF')

RNP APCH - GPS.

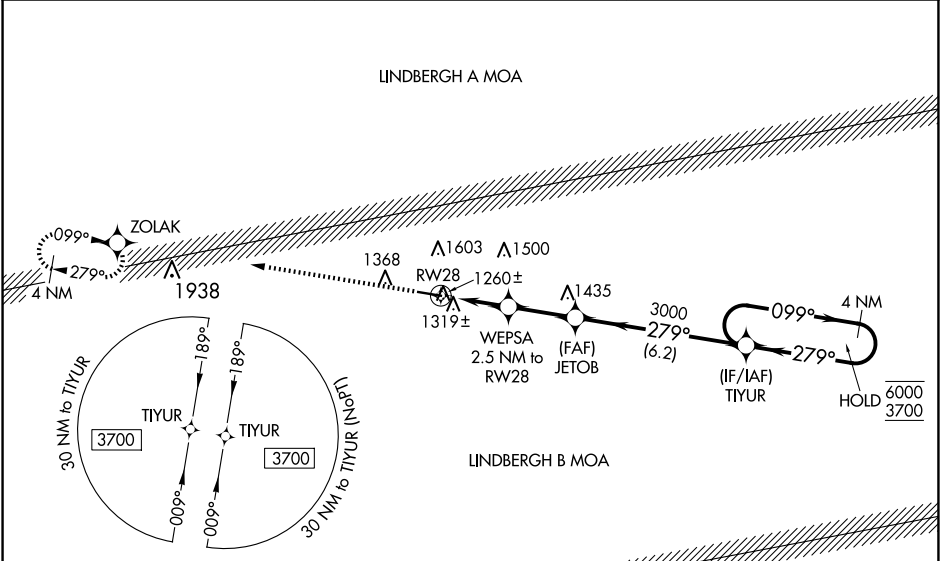
▼

▲NA

Circling Rwy 10 NA at night. Rwy 28 helicopter visibility reduction below 1 SM NA. Use West Plains altimeter setting; when not received, use Fort Leonard Wood altimeter setting and increase all MDA 100 feet; increase LP Cat C/D visibility ¼ SM, LNAV Cat C/D visibility ¼ SM and Circling Cat B/C visibility ¼ SM. Straight-in Rwy 28 at night, Circling Rwy 28 at night, operational VGSI required, remain on or above VGSI glidepath until threshold.

MISSED APPROACH: Climb to 3700 direct ZOLAK and hold.

UNO ASOS 123.825	KANSAS CITY CENTER 128.35 284.675	UNICOM 122.8 (CTAF) 0
----------------------------	---	--



ELEV 1182	TDZE 1162
------------------	------------------

1357±

5005 X 75

28

0.9% UP

279°

3700

ZOLAK

WEPSA
2.5 NM to RW28

JETOB

TIYUR

4 NM Holding Pattern

3000

2100

3000

6000

3700

2.5 NM

2.4 NM

6.2 NM

CATEGORY	A	B	C	D
LP MDA	1560-1	398 (400-1)	1560-1½	398 (400-1½)
LNAV MDA	1620-1	458 (500-1)	1620-1¾	458 (500-1¾)
CIRCLING	1880-1 698 (700-1)	2080-1¼ 898 (900-1¼)	2080-2¾ 898 (900-2¾)	2180-3 998 (1000-3)

MIRL Rwy 10-28 **0**