

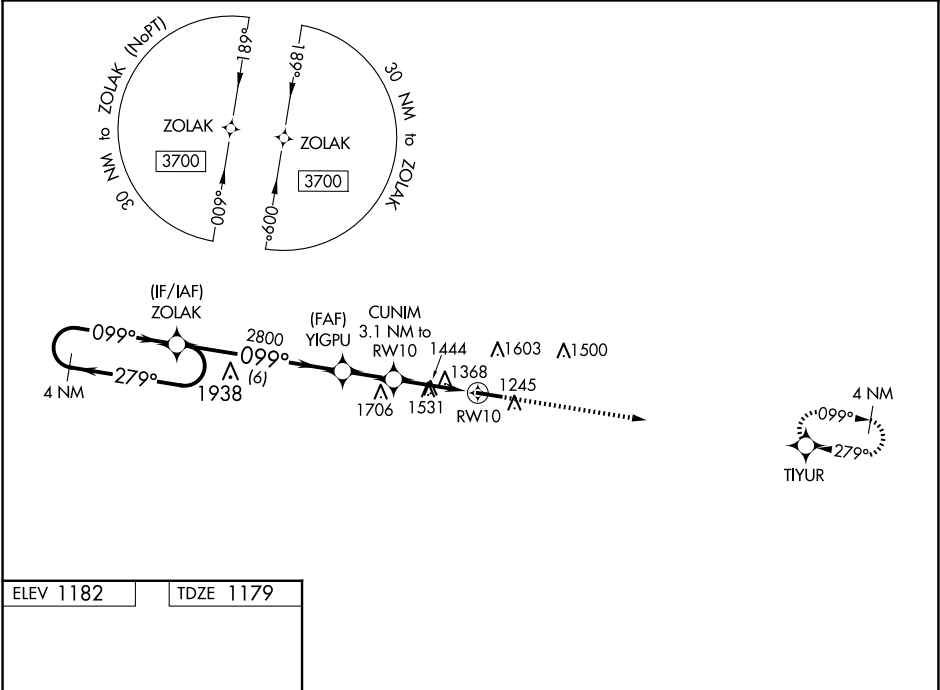
WAAS CH <b>73032</b> <b>W10A</b>	APP CRS <b>099°</b>	Rwy Idg TDZE <b>1179</b> Apt Elev <b>1182</b>
--	------------------------	---

RNAV (GPS) RWY 10

MOUNTAIN VIEW (MNTF)

RNP APCH - GPS.	
<div><div>▼</div><div>▲NA</div></div> <div>Procedure NA at night. Rwy 10 helicopter visibility reduction below 1 SM NA. Use West Plains altimeter setting, when not received, use Fort Leonard Wood altimeter setting and increase all MDA 80 feet; increase LP Cats C and D visibility ¼ mile, increase LNAV Cat B visibility ¼ mile, LNAV Cats C and D visibility ⅓ mile, and increase Circling Cats B and C visibility ¼ mile.</div>	MISSED APPROACH: Climb to 3700 direct TIYUR and hold.

UNO ASOS <b>123.825</b>	KANSAS CITY CENTER <b>128.35 284.675</b>	UNICOM <b>122.8 (CTAF) ①</b>
----------------------------	---	---------------------------------



★ 1357±

5005 X 75

0.9% UP

01

28

099°

MIRL Rwy 10-28

4 NM Holding Pattern

ZOLAK

3700

279°

099°

YIGPU

2800

099°

CUNIM

3.1 NM to RW10

2200

6 NM

1.9 NM

3.1 NM

RW10

Visual Segment - Obstacles.

3700

TIYUR

CATEGORY	A	B	C	D
LP MDA	1780-1	601 (600-1)	1780-1¾	601 (600-1¾)
LNAV MDA	1820-1	641 (700-1)	1820-1⅞	641 (700-1⅞)
CIRCLING	1880-1 698 (700-1)	2080-1¼ 898 (900-1¼)	2080-2¾ 898 (900-2¾)	2180-3 998 (1000-3)