

WAAS
CH **78131**
W16A

APP CRS
164°

Rwy Idg
TDZE **1206**
Apt Elev **1206**

RNAV (GPS) RWY 16

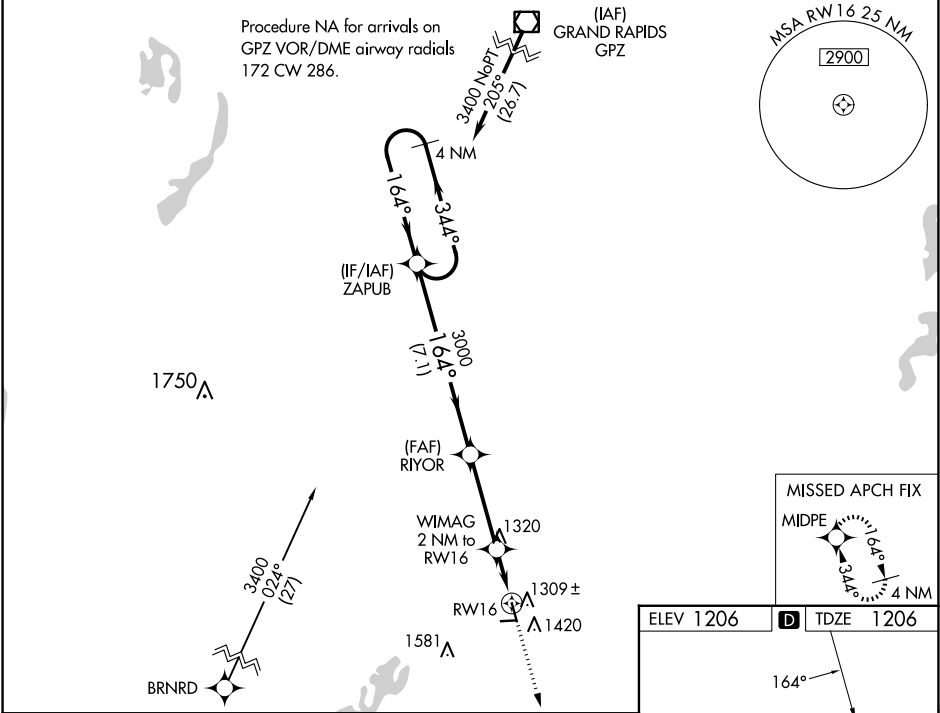
AITKIN MUNI/STEVE KURTZ FLD (AIT)

⚠ For uncompensated Baro-VNAV systems, LNAV/VNAV NA below -17°C (2°F) or above 54°C (130°F).

⚠ Baro-VNAV and VDP NA when using Mc Gregor altimeter setting. DME/DME RNP-0.3 NA. When local altimeter setting not received; use Mc Gregor altimeter setting and increase all DA and MDA 40 feet; increase LPV all Cats visibilities ¼ SM, LNAV/VNAV all Cats and LNAV Cat C visibilities ½ SM. Circling NA to Rwys 8 and 26. Rwy 16 helicopter visibility reduction below ¾ SM NA.

MISSED APPROACH:
Climb to 3400 direct
MIDPE and hold.

AWOS-3 118.675	MINNEAPOLIS CENTER 118.05 239.0	UNICOM 123.05 (CTAF) 0
--------------------------	---	----------------------------------



4 NM Holding Pattern ZAPUB		VGSI and RNAV glidepath not coincident (VGSI Angle 3.00/TCH 32).		3400	MIDPE
3400 344° 164°		164°		3000	*LNAV only
GP 3.00° TCH 40		*1880		RW16	
7.1 NM		3.5 NM		1 NM 1 NM	
CATEGORY	A	B	C	D	
LPV DA	1518-1		312 (400-1)	NA	
LNAV/VNAV DA	1607-1 ¾		401 (500-1 ¾)	NA	
LNAV MDA	1560-1		354 (400-1)	NA	
CIRCLING	1780-1 574 (600-1)		1900-2 694 (700-2)	NA	

ELEV 1206

D TDZE 1206

164°

91

4000 X 75

26

34

3123 X 140

REIL Rwys 16 and 34 0

MIRL Rwy 16-34 0

NC-1, 07 AUG 2025 to 04 SEP 2025

NC-1, 07 AUG 2025 to 04 SEP 2025