

VOR/DME-A
DUCHESNE MUNI (U69)

MISSED APPROACH: Climbing right turn to 8000 direct MTU VOR/DME and hold.

UNICOM
122.8 (CTAF) **L**

A7010

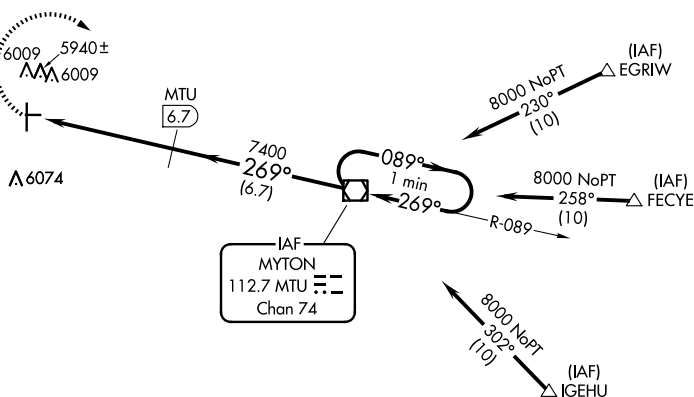
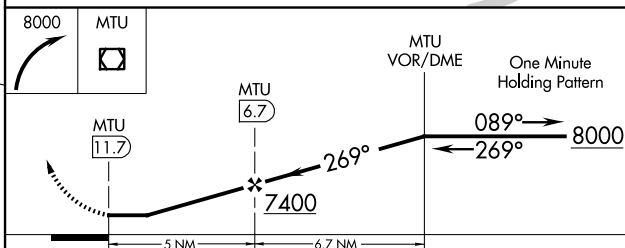
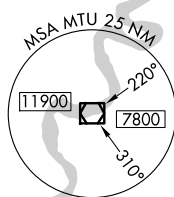



Diagram illustrating the FAF assembly structure. The assembly consists of a vertical ZrO₂ tube (35-41) surrounded by a 5800 X 60 layer. A horizontal 3091 X 75 layer is attached to the tube, with a 0.7% UP label. A 269° 5 NM layer is shown at the bottom, with a label 'from FAF'.

MIRL Rwy 17-35 **L**

7088



CATEGORY	A	B	C	D
 CIRCLING	6660-1¼	829 (900-1¼)	6660-2½ 829 (900-2½)	NA