


VOR/DME BQZ 112.2 Chan 59	APP CRS 352°	Rwy Ldg TDZE Apt Elev	N/A N/A 6882
---	------------------------	-----------------------------	---

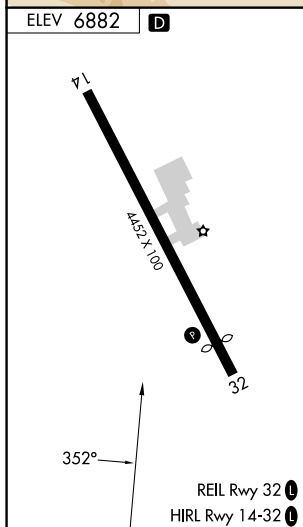
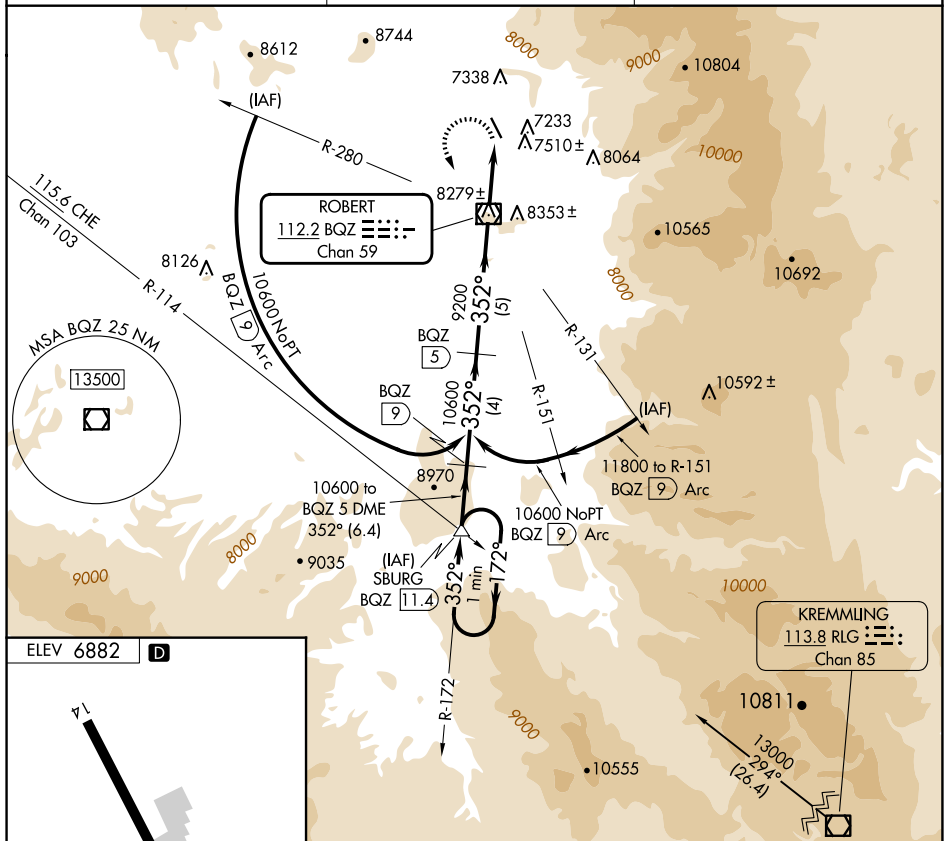
VOR/DME-C

STEAMBOAT SPRINGS/BOB ADAMS FLD (SBS)

 When local altimeter setting not received, use Yampa Valley altimeter setting and increase all MDA 80 feet. Procedure NA at night. Circling NA northeast of Rwy 14-32.

MISSED APPROACH: Climbing left turn to 12100 direct BQZ VOR/DME then on BQZ VOR/DME R-172 to SBURG INT/BQZ 11.4 DME and hold.

AWOS-3 118.325	DENVER CENTER 120.475 235.975	UNICOM 122.8 (CTAF) ①
--------------------------	---	---------------------------------



One Minute Holding Pattern

SBURG BQG 11.4

12100

172°

352°

352°

10600

6.4 NM

5 NM

2.9 NM

9200

BQG 5

BQG VOR/DME

BQG 2.9

CATEGORY	A	B	C	D
CIRCLING	8140-1¼	8140-1½	NA	NA
	1258 (1300-1¼)	1258 (1300-1½)		

VOR/DME-C