

APP CRS
323°

Rwy Ldg
TDZE
Apt Elev
N/A
N/A
6882

RNAV (GPS)-E

STEAMBOAT SPRINGS/BOB ADAMS FLD (SBS)

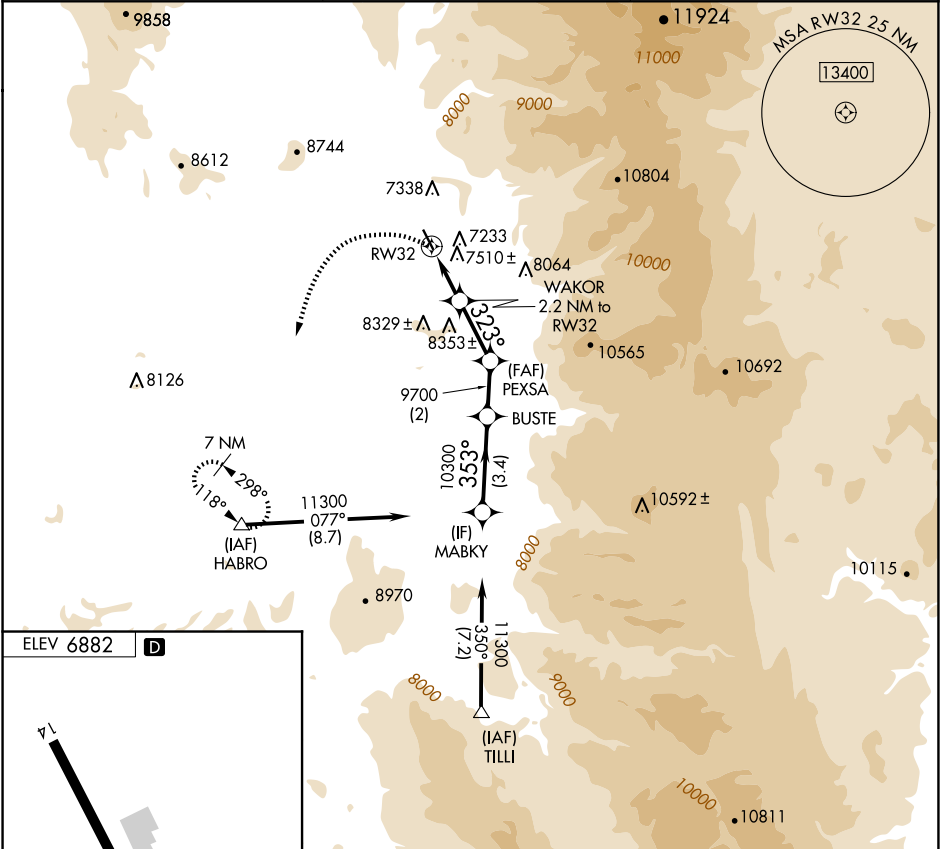
NA

-25°C

Circling NA northeast of Rwy 14-32.
DME/DME RNP- 0.3 NA.
When local altimeter setting not received, use Yampa Valley altimeter setting and increase all MDA 80 feet.

MISSED APPROACH: Climbing left turn to 11300 direct HABRO and hold, continue climb-in-hold to 11300.

AWOS-3 118.325	DENVER CENTER 120.475 235.975	UNICOM 122.8 (CTAF) 0
-------------------	----------------------------------	--------------------------



ELEV 6882

D

11300 HABRO

VGSI and descent angles not coincident (VGSI Angle 4.00/TCH 40).

MABKY

WAKOR 2.2 NM to RW32

PEXSA

BUSTE

353°

11300

Procedure Turn NA

RW32

7.75° TCH 40

323°

8740

10300

9700

2.2 NM

2.4 NM

2 NM

3.4 NM

CATEGORY	A	B	C	D
CIRCLING	8140-1¼ 1258 (1300-1¼)	8140-1½ 1258 (1300-1½)	NA	