

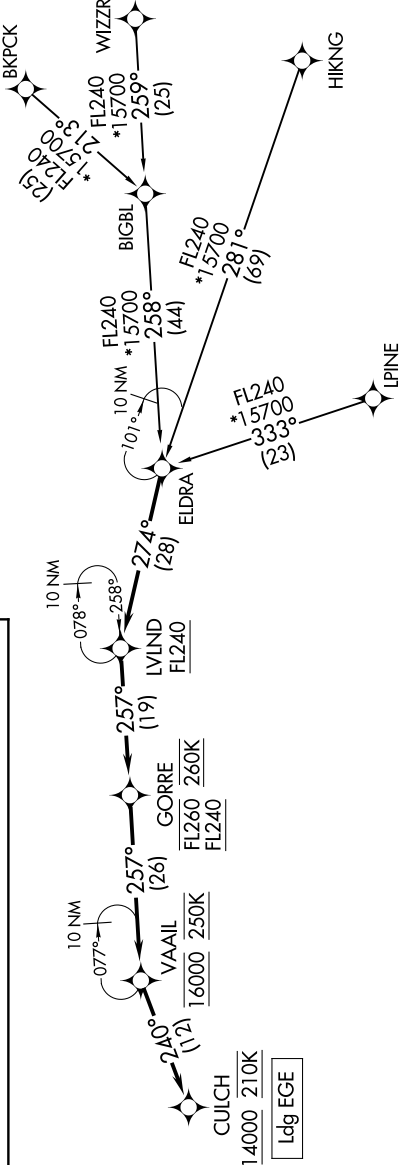
SW-1, 07 AUG 2025 to 04 SEP 2025

RNAV 1 - DME/DME/IRU or GPS.	DENVER CENTER 128.65 282.2 ATIS 135.575
RADAR required for non-GPS equipped aircraft.	

ARRIVAL ROUTE DESCRIPTION

- BIGBL TRANSITION (BIGBL.VAAIL1)
- BKPKCK TRANSITION (BKPKCK.VAAIL1)
- HIKNG TRANSITION (HIKNG.VAAIL1)
- LPINE TRANSITION (LPINE.VAAIL1)
- WIZZR TRANSITION (WIZZR.VAAIL1)

From ELDRA on track 274° to cross LVLND at or above FL240, then on track 257° to cross GORRE between FL240 and FL260 and at 260K, then on track 257° to cross VAAIL at 16000 and at 250K, then on track 240° to cross CULCH at or above 14000 and at 210K. Expect RNAV RWY 25 approach.



NOTE: Chart not to scale.

SW-1, 07 AUG 2025 to 04 SEP 2025