

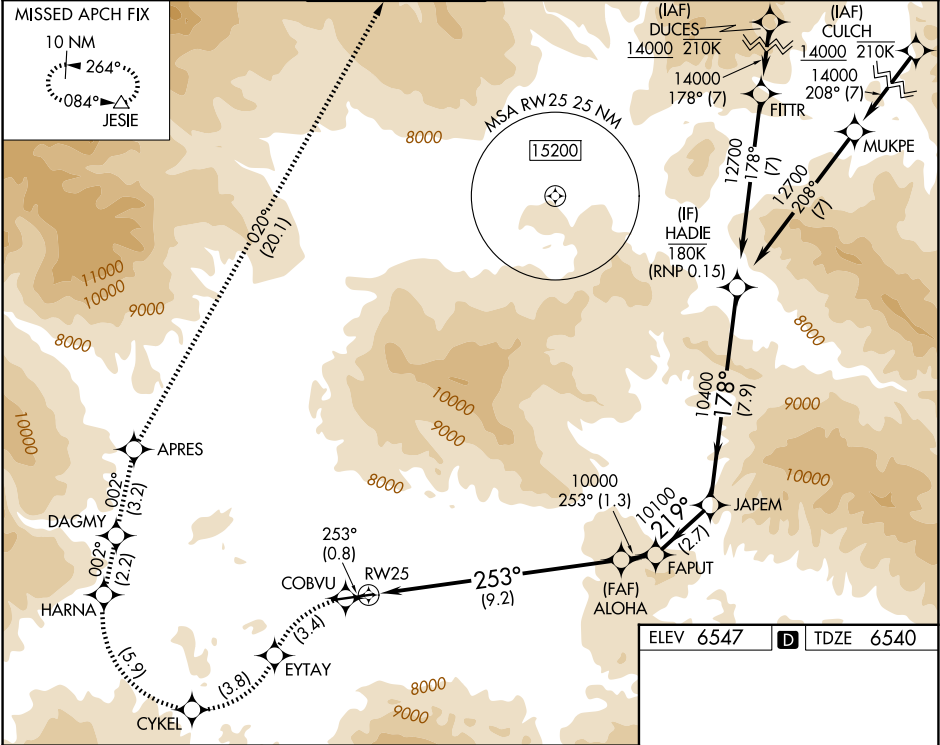
APP CRS	Rwy Ldg	8000
253°	TDZE	6540
	Apt Elev	6547



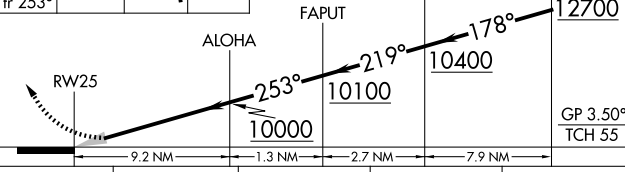
# RNAV (RNP) Z RWY 25

EAGLE COUNTY RGNL (EGE)

RNP AR APCH-GPS, RF, MIN RNP 0.11. Authorization required. Missed approach requires RNP <1.00.	MALSR	MISSED APPROACH: (Do not exceed 185K until HARNA) Climb to 15000 on the RNAV missed approach route to JESIE and hold. *Missed approach requires minimum climb of 281 feet per NM to 9000.
When local climeter setting not received, procedure NA. For uncompensated Baro-VNAV systems, procedure NA below -27°C or above 33°C. For inop ALS increase RNP 0.11* all visibilities to ½ SM.		

ATIS	DENVER CENTER	EAGLE TOWER *	GND CON	CLNC DEL	DENVER CLNC DEL
135.575	128.65 282.2	119.8 (CTAF) 0	121.8	124.75	124.75 (When tower closed)



15000 ↑ tr 253°	COBVU 	EYTAY 	VGSI and RNAV glidepath not coincident (VGSI Angle 3.00/TCH 55).		HADIE	
						
CATEGORY			A	B	C	D
RNP 0.11 DA*			NA		6814-½ 274 (300-½)	
RNP 0.11 DA			NA		7181-1⅓ 641 (700-1⅓)	
AUTHORIZATION REQUIRED						

ELEV 6547	TDZE 6540
-----------	-----------

0.9% UP → 9000 X 150 → 1.0% DOWN →

TWR

253°

HIRL Rwy 7-25 0

REIL Rwy 7 0

AUTHORIZATION REQUIRED

SW-1, 07 AUG 2025 to 04 SEP 2025

SW-1, 07 AUG 2025 to 04 SEP 2025