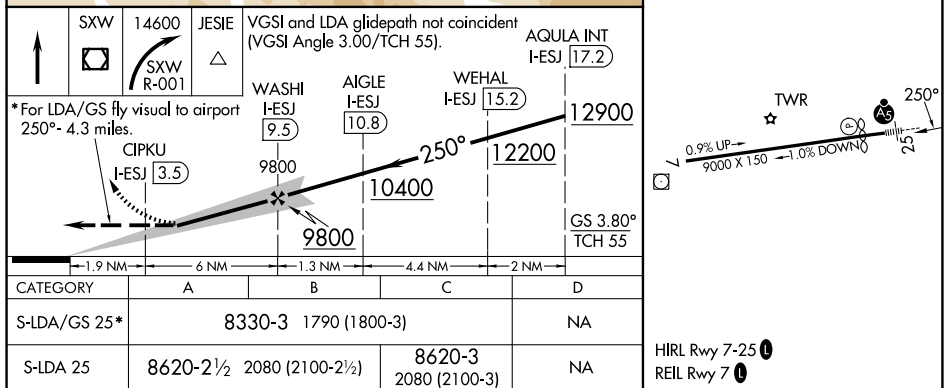
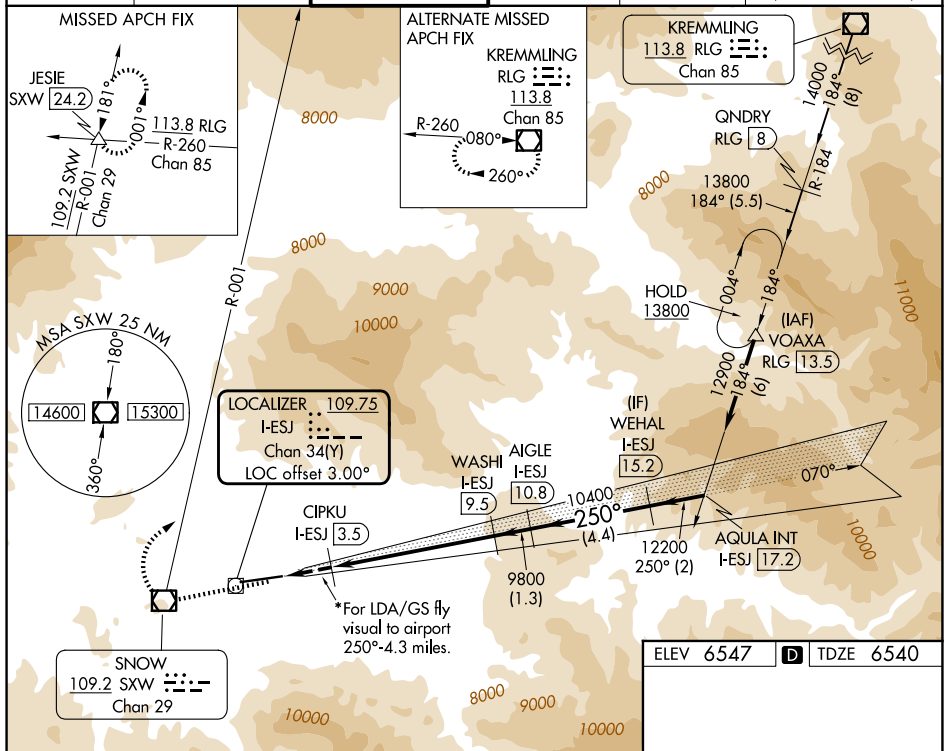


LDA RWY 25  
EAGLE COUNTY RGNL (EGE)

**MISSED APPROACH:** Climb direct SXW VOR/DME, cross SXW VOR/DME, then climbing right turn to 14600 on SXW VOR/DME R-001 to JESIE SXW 24.2 DME and hold, continue climb-in-hold to 14600. \*Missed approach requires minimum climb of 275 feet per NM to 11700.

ATIS <b>135.575</b>	DENVER CENTER <b>128.65 282.2</b>	EAGLE TOWER ★ <b>119.8 (CTAF) 0</b>	GND CON <b>121.8</b>	CLNC DEL <b>124.75</b>	DENVER CLNC DEL <b>124.75</b> (When tower closed)
------------------------	--------------------------------------	--	-------------------------	---------------------------	---



SW-1, 07 AUG 2025 to 04 SEP 2025