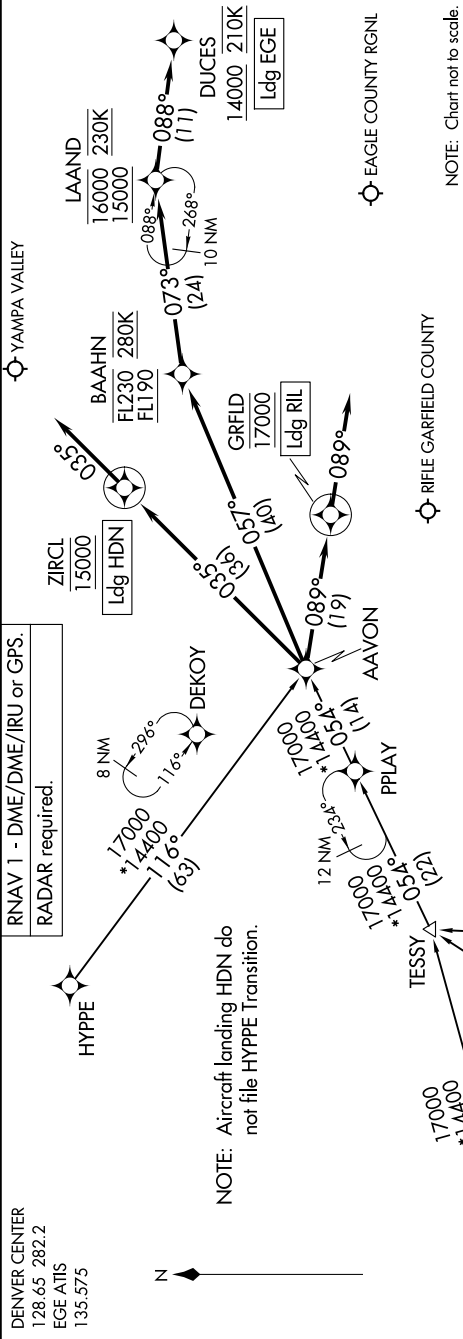


SW-1, 07 AUG 2025 to 04 SEP 2025



ARRIVAL ROUTE DESCRIPTION

- HYPPE TRANSITION (HYPPE.AAVON1)
- IBSKI TRANSITION (IBSKI.AAVON1)
- KIMMR TRANSITION (KIMMR.AAVON1)
- MAESA TRANSITION (MAESA.AAVON1)
- PPLAY TRANSITION (PPLAY.AAVON1)
- TESSY TRANSITION (TESSY.AAVON1)
- VIRDE TRANSITION (VIRDE.AAVON1)

LANDING EGE: From AAVON on track 057° to cross BAAHN between FL190 and FL230 and at 280K, then on track 073° to cross LAAND between 15000 and 16000 and at 230K, then on track 088° to cross DUCES at or above 14000 and at 210K. Expect RNAV RWY 25 approach.

LANDING HDN: From AAVON on track 035° to cross ZIRCL at 15000, then on track 035°. Expect RADAR vectors to final approach course.

LANDING RIL: From AAVON on track 089° to cross GRFLD at 17000, then on track 089°. Expect RADAR vectors to final approach course.

SW-1, 07 AUG 2025 to 04 SEP 2025