

APP CRS
271°

Rwy Idg
TDZE
Apt Elev

4504
481
481

RNAV (GPS) RWY 27

CLARKSVILLE MUNI (H35)

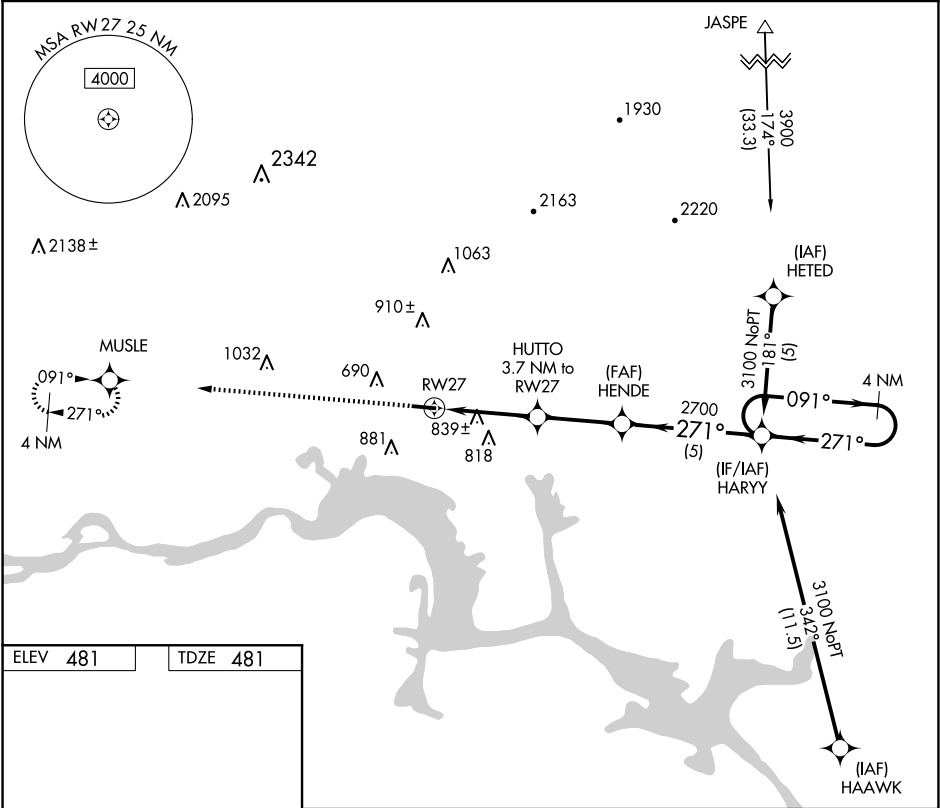
▼

NA

Use Russellville Rgnl altimeter setting; if not received, use Fort Smith Rgnl altimeter setting and increase all MDAs 60 feet. DME/DME RNP-0.3 NA. Procedure NA at night. Rwy 27 helicopter visibility reduction below 1 SM NA.

MISSED APPROACH: Climb to 3400 direct MUSLE WP and hold.

MEMPHIS CENTER 128.475 377.15	UNICOM 122.8 (CTAF)
----------------------------------	------------------------



ELEV 481

TDZE 481

MIRL Rwy 9-27

4504 X 75

0.7% UP

271°

3400

MUSLE

Visual Segment - Obstacles.

HARRY

4 NM Holding Pattern

HUTTO 3.7 NM to RW27

HENDE

2700

1720

3.7 NM

3 NM

5 NM

CATEGORY	A	B	C	D
LNAV MDA	1160-1	679 (700-1)	NA	
CIRCLING	1220-1 739 (800-1)	1240-1¼ 759 (800-1¼)	NA	