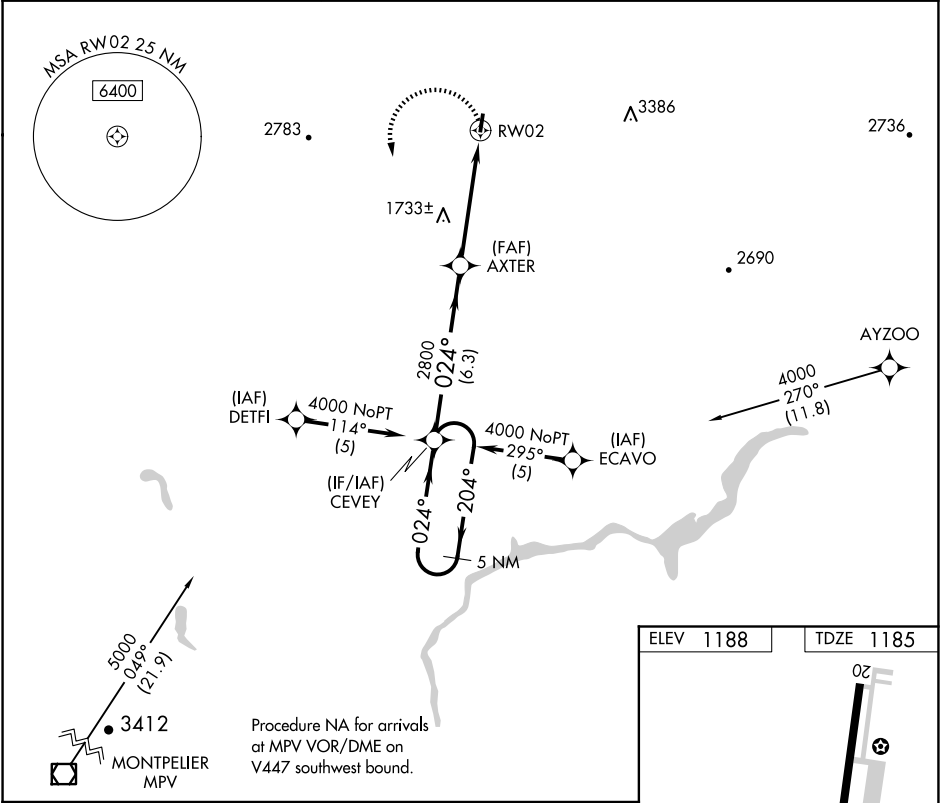


APP CRS	Rwy Idg	3302
024°	TDZE	1185
	Apt Elev	1188

RNAV (GPS) RWY 2  
CALEDONIA COUNTY (CDA)

RNP APCH - GPS.	MISSED APPROACH: Climbing left turn to 4000 direct CEVEY and hold.
When local altimeter setting not received, use Whitefield altimeter setting: increase all MDA 80 feet and visibility LNAV Cat A and Circling Cat A ¼ SM. Circling Rwy 20 NA at night.	

AWOS-3 119.275	BOSTON CENTER 135.7 282.2	UNICOM 122.8 (CTAF) 1
-------------------	------------------------------	--------------------------



5 NM Holding Pattern		Visual Segment - Obstacles.		4000	CEVEY
4000		2800		RWY 2	
204°		204°		204°	
024°		024°		024°	
6.3 NM		2.5 NM		2.4 NM	
CATEGORY	A	B	C	D	
LNAV MDA	2000-1 815 (900-1)	2000-1¼ 815 (900-1¼)	NA		
CIRCLING	2000-1 812 (900-1)	2000-1¼ 812 (900-1¼)	NA		

