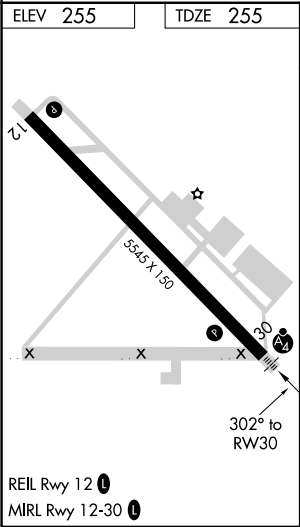
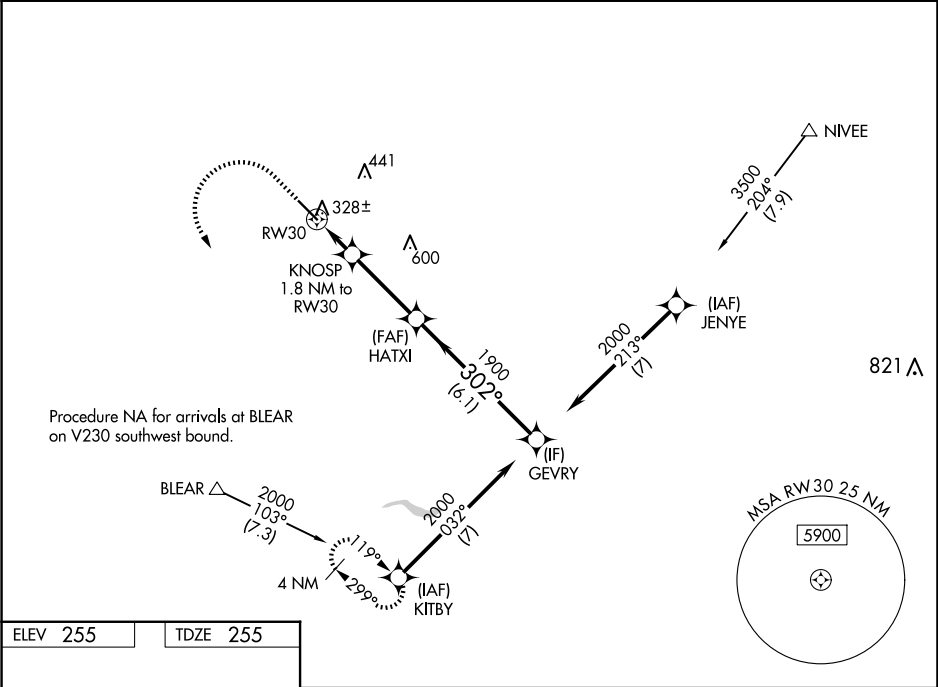


WAAS CH 90209 W30A	APP CRS 302°	Rwy Idg TDZE 255 Apt Elev 255
--	------------------------	---

RNAV (GPS) RWY 30

MADERA MUNI (MAE)

RNP APCH - GPS.		MALSF	MISSED APPROACH: Climb to 800 then climbing left turn to 2000 to KITBY and hold.
For uncompensated Baro-VNAV systems, LNAV/VNAV NA below -2°C or above 54°C. Inop table does not apply to LPV and LNAV/VNAV Cat A/B/C.			
ASOS 134.725	FRESNO APP CON 119.45	CLNC DEL 119.45	UNICOM 122.8 (CTAF)



800		2000	KITBY		VGSI and RNAV glidepath not coincident (VGSI Angle 3.00/TCH 34).
KNOSP 1.8 NM to RW30		HATXI 1900	GEVRY 2000		
1.1 NM to RW30		302°		1900	
860		GP 3.00°		TCH 35	
1.1 NM		0.7 NM	3.3 NM	6.1 NM	
CATEGORY	A	B	C	D	
LPV DA	505-3/4	250 (300-3/4)		NA	
LNAV/VNAV DA	505-3/4	250 (300-3/4)		NA	
LNAV MDA	640-3/4	385 (400-3/4)	640-7/8 385 (400-7/8)	NA	
CIRCLING	680-1 425 (500-1)	720-1 465 (500-1)	760-1 1/2 505 (600-1 1/2)	NA	

SW-2, 07 AUG 2025 to 04 SEP 2025

SW-2, 07 AUG 2025 to 04 SEP 2025