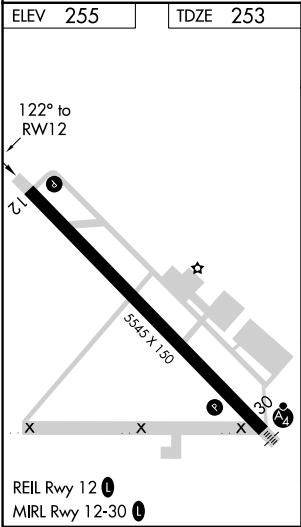
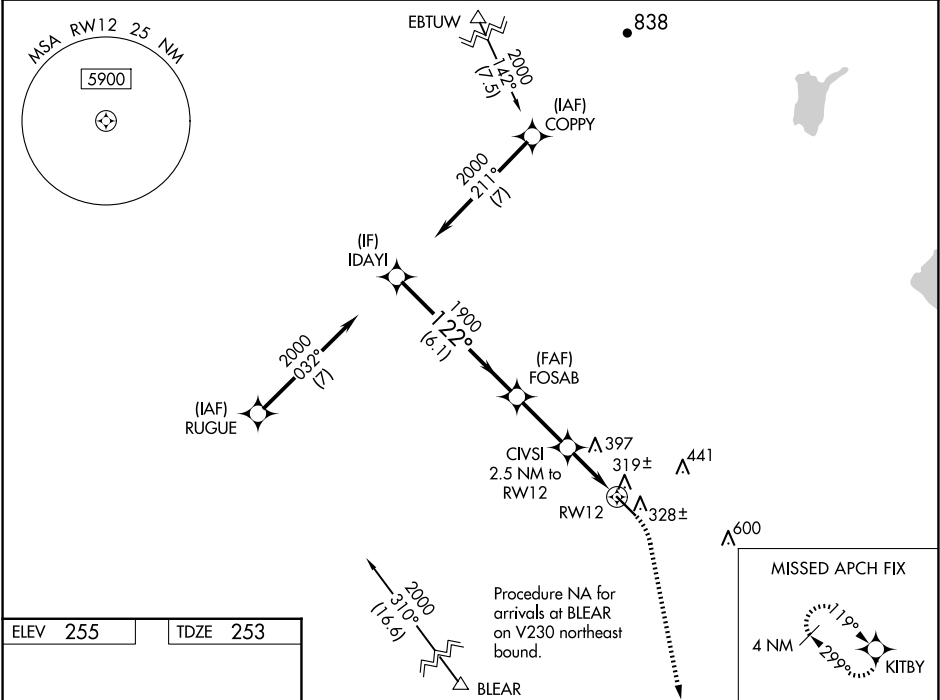


WAAS CH 62909 W12A	APP CRS 122°	Rwy Idg TDZE Apt Elev	5545 253 255
--	------------------------	-----------------------------	---

RNAV (GPS) RWY 12

MADERA MUNI (M.A.E)

RNP APCH - GPS.		MISSED APPROACH: Climb to 800 then climbing right turn to 2000 direct KITBY and hold.	
For uncompensated Baro-VNAV systems, LNAV/VNAV NA below -2°C or above 54°C.			
ASOS 134.725	FRESNO APP CON 119.45	CLNC DEL 119.45	UNICOM 122.8 (CTAF) 0



IDAY1		VGSi and RNAV glidepath not coincident (VGSi Angle 3.00/TCH 34).		800	2000	KITBY
2000		FOSAB				
122°		1900				
GP 3.00°		1080				
6.1 NM		2.6 NM		1.1 NM to RWY 12		
CATEGORY		A		B		
LPV DA		503-3/4		250 (300-3/4)		
LNAV/VNAV DA		503-3/4		250 (300-3/4)		
LNAV MDA		620-1		367 (400-1)		
CIRCLING		680-1 425 (500-1)		720-1 465 (500-1)		
				760-1 1/2 505 (600-1 1/2)		