

ANAHUAC, TEXAS

AL-6395 (FAA)

23334

APP CRS <b>124°</b>	Rwy Idg	<b>3005</b>
	TDZE	<b>21</b>
	Apt Elev	<b>21</b>

RNAV (GPS) RWY 12

CHAMBERS COUNTY (T00)

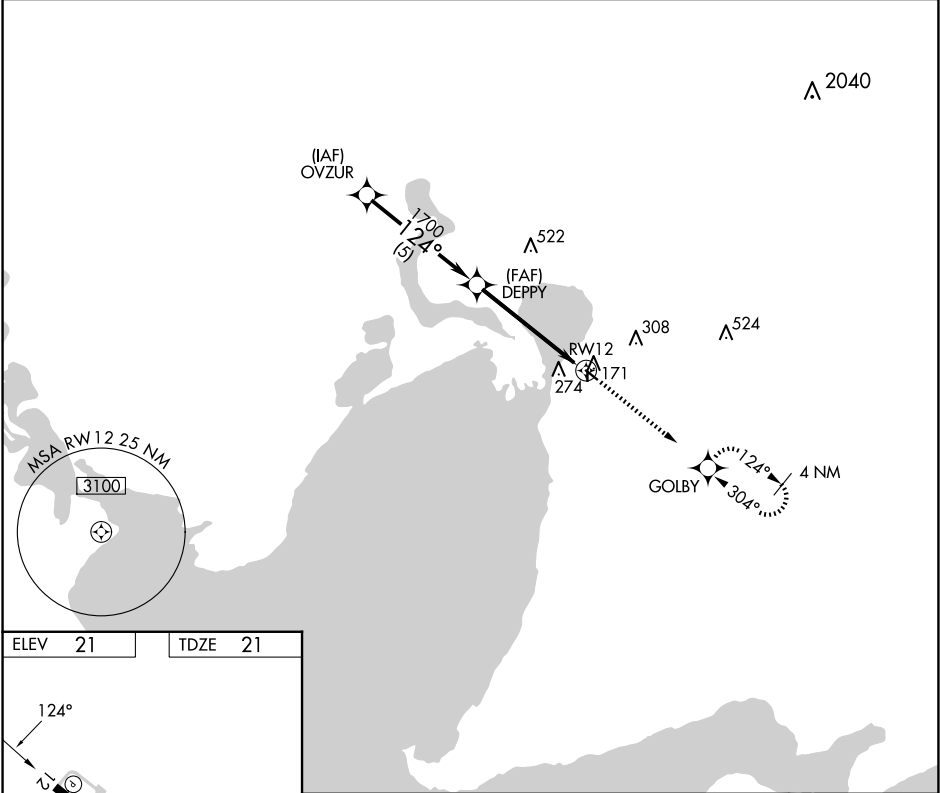
▼

NA

RADAR required. Use William P Hobby altimeter setting. GPS or RNP-0.3 required.  
DME/DME RNP-0.3 NA. Procedure NA at night. Rwy 12 helicopter visibility reduction below 1 SM NA. Circling NA to Rwys 17 and 35.

MISSED APPROACH: Climb to 3000 direct GOLBY WP and hold.

HOUSTON APP CON <b>134.45 284.0</b>	CTAF <b>122.9 0</b>
--	------------------------



ELEV 21

TDZE 21

MIRL Rwy 12-30 0

LIRL Rwy 12-30

OVZUR

DEPPY

RW12

2000

1700

3000

GOLBY

Procedure Turn NA

124°

3.09°

TCH 40

5 NM

5 NM

CATEGORY	A	B	C	D
LNAV MDA	560-1	539 (600-1)	560-1½ 539 (600-1½)	NA
CIRCLING	660-1	639 (700-1)	700-2 679 (700-2)	NA

ANAHUAC, TEXAS  
Orig-C 17JUN21

29°46'N-94°40'W

CHAMBERS COUNTY (T00)

RNAV (GPS) RWY 12

SC-5, 07 AUG 2025 to 04 SEP 2025

SC-5, 07 AUG 2025 to 04 SEP 2025