

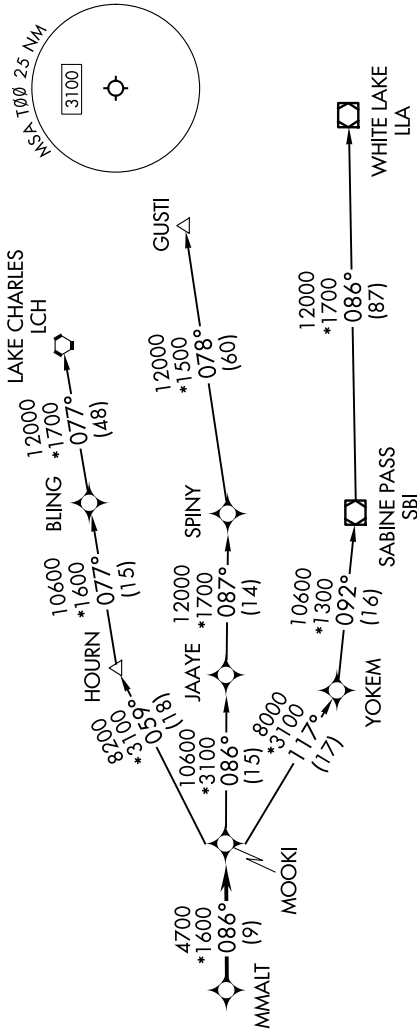
HOUSTON DEP CON  
134.45 284.0  
CTAF  
122.9

RNAV 1 - DME/DME/IRU or GPS.  
RADAR required.

(MMALT7.MMALT) 23334  
MMALT SEVEN DEPARTURE (RNAV)

AL-6395 (FAA)

CHAMBERS COUNTY (T000)  
ANAHUAC, TEXAS



NOTE: GUSTI and LCH Transitions ATC assigned only for aircraft departing AXH, EFD, GLS, HPY, IWS, LBX, LVJ, SGR, TME, T00, T41 and 54T.

DEPARTURE ROUTE DESCRIPTION

TAKEOFF RUNWAY 12: Climb on heading 124° to 540, for RADAR vectors to MMALT, thence . . .  
TAKEOFF RUNWAY 30: Climb on heading 304° to 540, for RADAR vectors to MMALT, thence . . .

. . . on track 086° to MOOKI, then on (transition). Maintain ATC assigned altitude.  
Expect filed altitude 10 minutes after departure.

GUSTI TRANSITION (MMALT7.GUSTI)  
LAKE CHARLES TRANSITION (MMALT7.LCH)  
WHITE LAKE TRANSITION (MMALT7.LLA)

TAKEOFF MINIMUMS  
Rwys 17, 35: NA-Environmental.  
Rwys 12, 30: Standard with minimum  
climb of 500'/NM to 540.

NOTE: Chart not to scale.

MMALT SEVEN DEPARTURE (RNAV)  
(MMALT7.MMALT) 30NOV23

CHAMBERS COUNTY (T000)  
ANAHUAC, TEXAS