

WAAS CH 90331 W23A	APP CRS 229°	Rwy Idg TDZE 166 Apt Elev 166	5000 166 166
--	------------------------	---	---

RNAV (GPS) RWY 23

MOUNT OLIVE MUNI (W40)

RNP APCH - GPS.

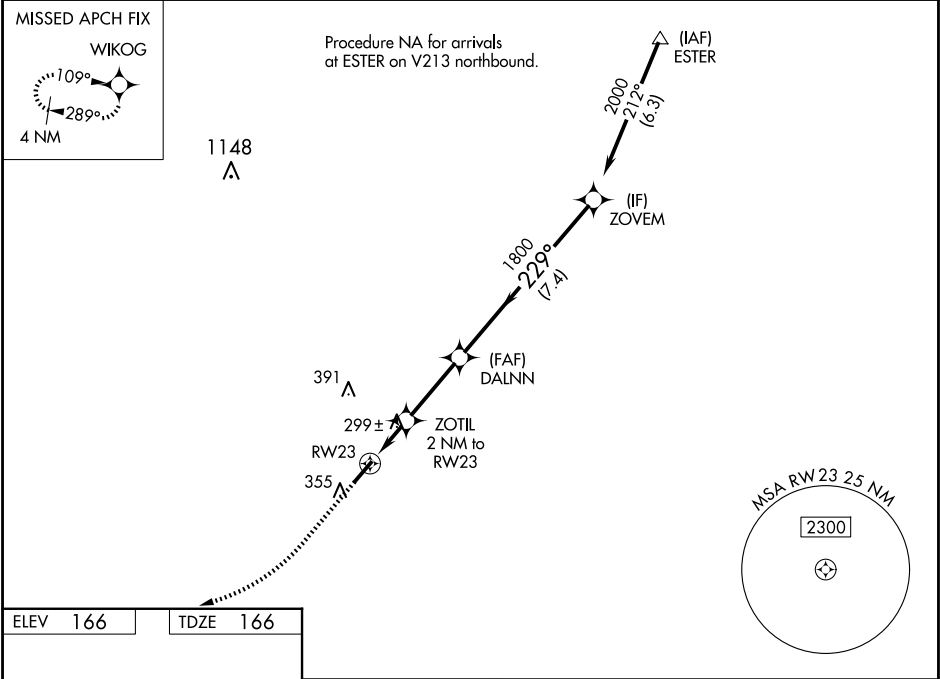
▼

▲

Rwy 23 helicopter visibility reduction below ¾ SM NA.
When local altimeter setting not received, use Goldsboro altimeter setting.

MISSED APPROACH: Climb to 700 then climbing right turn to 2000 direct WIKOG and hold.

AWOS-3P 120.075	SEYMOUR JOHNSON APP CON* 119.7 273.6	UNICOM 122.8 (CTAF) 0
---------------------------	--	---------------------------------



391

▲

299 ± 7

ZOTIL

2 NM to RW23

355

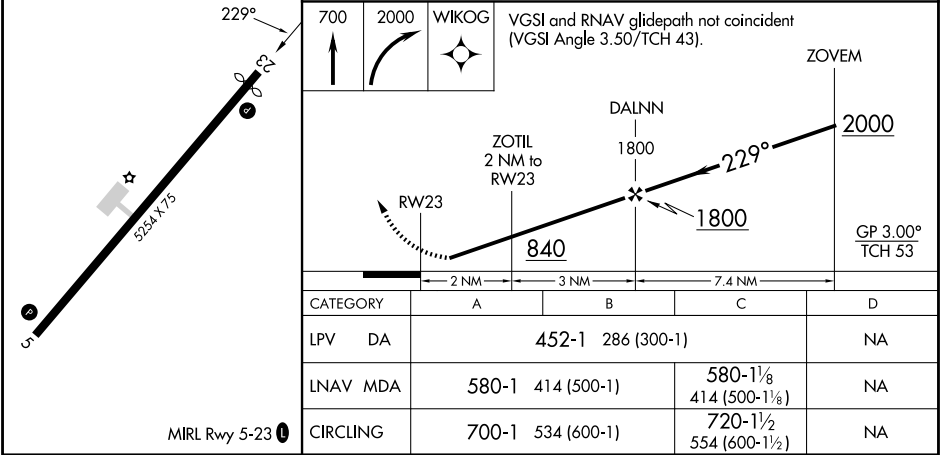
RW23

229°

(FAF) DALNN

MSA RW23 25 NM

2300



SE-2, 07 AUG 2025 to 04 SEP 2025

SE-2, 07 AUG 2025 to 04 SEP 2025