

APP CRS
314°

Rwy ldg
TDZE
Apt Elev

3004
1167
1169

RNAV (GPS) RWY 31

DAVID JAY PERRY (1K4)

RNP APCH - GPS.

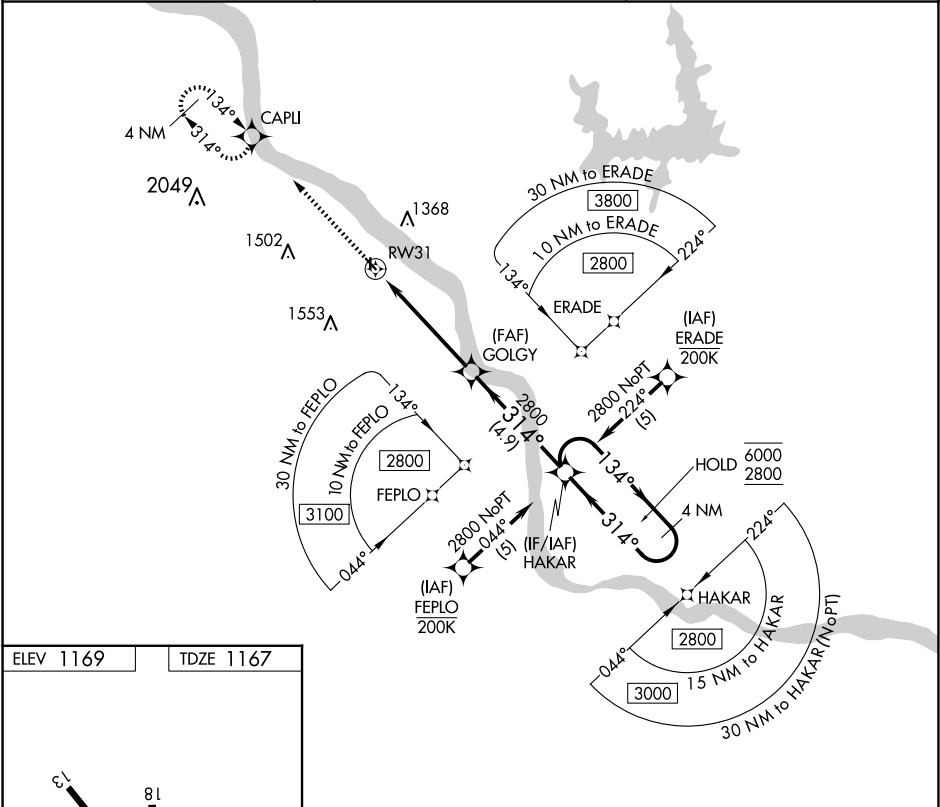
▼

NA

Rwy 31 helicopter visibility reduction below 1 SM NA.
Procedure NA at night. Use OKC altimeter setting.

MISSED APPROACH: Climb to 3100 direct CAPLI and hold, continue climb-in-hold to 3100.

OKC ASOS 125.85	OKE CITY APP CON 120.45 288.325	UNICOM 122.7 (CTAF) 0
---------------------------	---	---------------------------------



ELEV 1169

TDZE 1167

31

81

1801 X 60

3001 X 60

36

0.4% UP

0.3% UP

314°

3100

CAPLI

GOLGY

HAKAR

4 NM Holding Pattern

314°

134°

6000

2800

5 NM

4.9 NM

CATEGORY	A	B	C	D
LNAV MDA	1680-1	513 (600-1)	1680-1 $\frac{3}{8}$ 513 (600-1 $\frac{3}{8}$)	NA
CIRCLING	1700-1 531 (600-1)	1840-1 671 (700-1)	1920-2 $\frac{1}{4}$ 751 (800-2 $\frac{1}{4}$)	NA