

WAAS CH 82330 W29A	APP CRS 291°	Rwy Idg TDZE 1164 Apt Elev 1171	5001
--	------------------------	---	-------------

RNAV (GPS) RWY 29

IOWA COUNTY (MRJ)

RNP APCH - GPS.

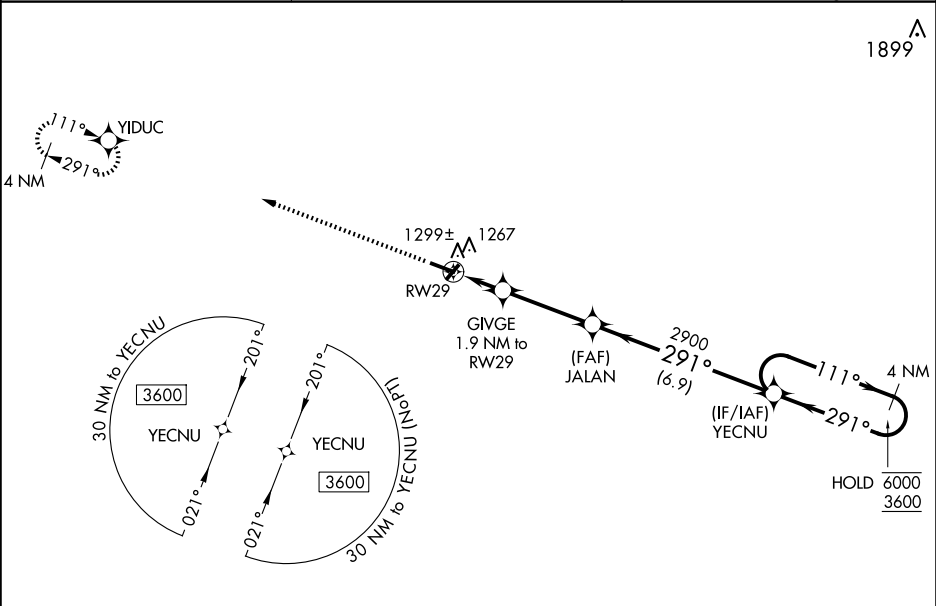
▼

▲

Baro-VNAV and VDP NA when using Platteville altimeter setting. For uncompensated Baro-VNAV systems, LNAV/VNAV NA below -17°C or above 54°C. When local altimeter setting not received, use Platteville altimeter setting and increase LPV DA to 1469 feet; increase LNAV/VNAV DA to 1524 feet; increase all MDAs 60 feet and LNAV visibility Cat C ¼ SM.

MISSED APPROACH:
Climb to 3500 direct
YIDUC and hold.

AWOS-3 118.525	CHICAGO CENTER 133.95 281.4	UNICOM 122.8 (CTAF) 0
--------------------------	---------------------------------------	---------------------------------



ELEV 1171	TDZE 1164
------------------	------------------

3500

YIDUC

VGSI and RNAV glidepath not coincident
(VGSI Angle 3.00/TCH 44).

4 NM Holding Pattern

GIVE
1.9 NM to RW29

JALAN
2900

YECNU

1800

2900

GP 3.00°
TCH 40

1.2 NM to RW29

1.2 0.7 3.4 6.9 NM

CATEGORY	A	B	C	D
LPV DA	1414-1 250 (300-1)			NA
LNAV/VNAV DA	1469-1 305 (300-1)			NA
LNAV MDA	1580-1	416 (500-1)	1580-1½ 416 (500-1½)	NA
CIRCLING	1620-1 449 (500-1)	1640-1 469 (500-1)	1640-1½ 469 (500-1½)	NA