

VOR BUD	APP CRS	Rwy Idg	3895
109.8	208°	TDZE	1003
		Apt Elev	1008

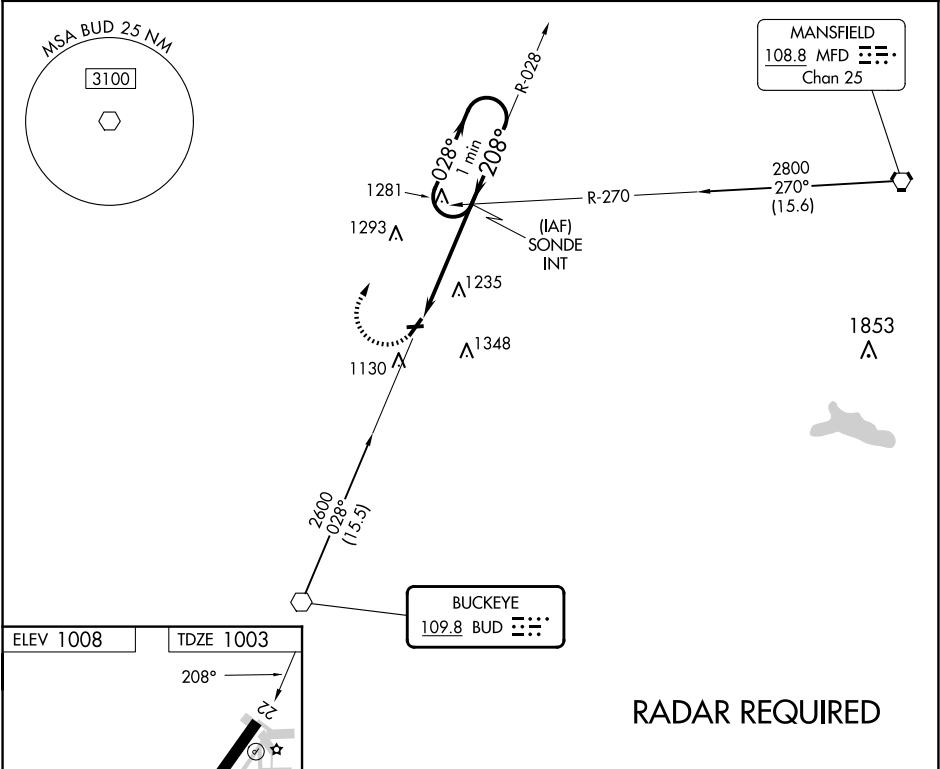
VOR RWY 22  
PORT BUCYRUS/CRAWFORD COUNTY (17G)

**V** Circling NA to Rwy 9 and 27. Rwy 22 helicopter visibility reduction below 1 SM NA.

**Δ** NA Straight-in and Circling Rwy 22 NA at night. When local altimeter setting not received, use Mansfield altimeter setting: increase all MDA 100 feet and visibility Cats B and C ½ SM.

**MISSED APPROACH:** Climbing right turn to 2600 on heading 090° and on BUD VOR R-028 to SONDE INT and hold.

AWOS-3 126.625	CLEVELAND APP CON ★ 128.35 360.65	UNICOM 122.8 (CTAF) 0
-------------------	--------------------------------------	--------------------------



ELEV 1008	TDZE 1003	RADAR REQUIRED			
208°		2600	BUD R-028	SONDE INT	VGSI and descent angles not coincident (VGSI Angle 3.00/TCH 26). One Minute Holding Pattern
2902 X 90 0.4% UP		SONDE INT 208° → 2600 ← 208° 3.25° TCH 40			
MIRL Rwy 4-22 REIL Rwy 4 and 22		4.5 NM			
FAF to MAP 4.5 NM					
Knots	60	90	120	150	180
Min:Sec	4:30	3:00	2:15	1:48	1:30
CIRCLING	1700-1	697 (700-1)	1700-2	692 (700-2)	NA