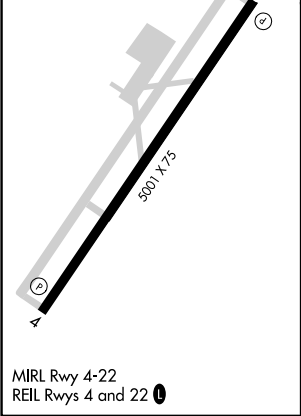
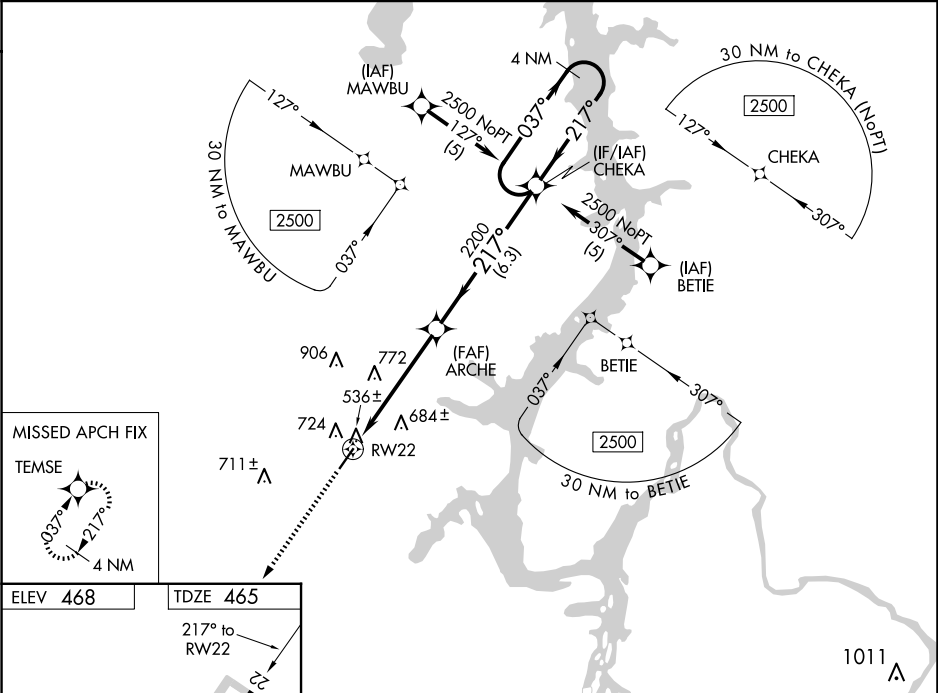


WAAS CH <b>82714</b> <b>W22A</b>	APP CRS <b>217°</b>	Rwy Idg TDZE <b>465</b> Apt Elev <b>468</b>	5001
--	------------------------	---	------

AL-6386 (FAA)

RNAV (GPS) RWY 22  
BENTON COUNTY (ØM4)

RNP APCH. Baro-VNAV NA. Rwy 22 helicopter visibility reduction below 1 SM NA. Use Beech River Rgnl altimeter setting; when not received, use Jackson altimeter setting and increase all DA 58 feet and all MDA 60 feet and increase LPV all Cats visibility ¼ mile, LNAV/VNAV all Cats visibility ¼ mile, and LNAV Cat C visibility ¼ mile. Procedure NA at night.		MISSED APPROACH: Climb to 2500 direct TEMSE and hold.
PVE AWOS-3 <b>118.125</b>	MEMPHIS CENTER <b>125.85 379.25</b>	UNICOM <b>122.8 (CTAF) Ø</b>



2500 TEMSE		VGSI and RNAV glidepath not coincident (VGSI Angle 3.35/TCH 17).		4 NM Holding Pattern	
2500		CHEKA		037° → 2500	
RW22		217°		← 217°	
5.3 NM		6.3 NM		GP 3.00° TCH 40	
CATEGORY	A	B	C	D	
LPV DA	833-1¼	368 (400-1¼)		NA	
LNAV/VNAV DA	980-1¾	515 (600-1¾)		NA	
LNAV MDA	1080-1	615 (700-1)	1080-1¾ 615 (700-1¾)	NA	

SE-1, 07 AUG 2025 to 04 SEP 2025

SE-1, 07 AUG 2025 to 04 SEP 2025