

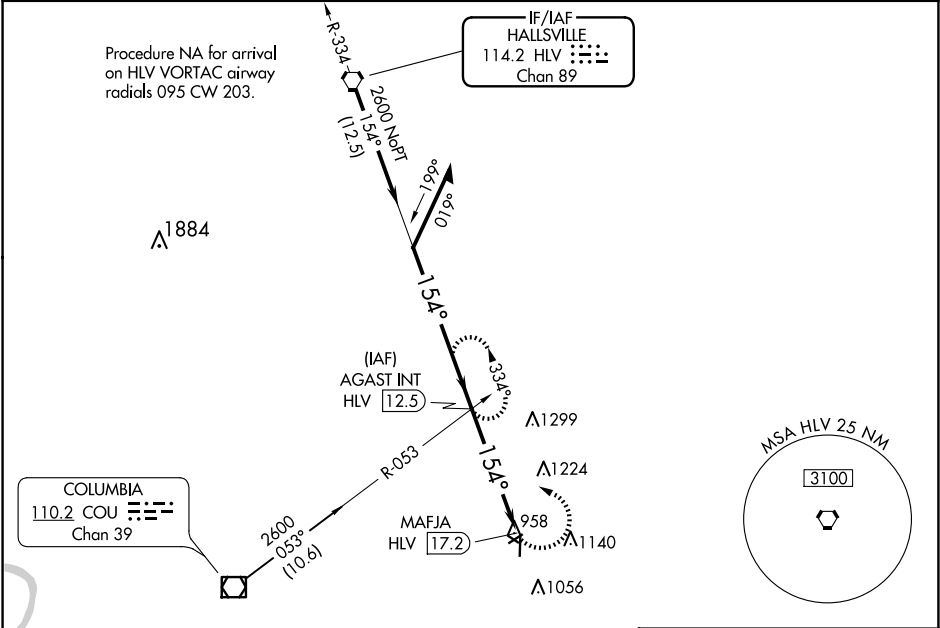
VORTAC HLW <b>114.2</b> Chan <b>89</b>	APP CRS <b>154°</b>	Rwy Idg TDZE Apt Elev <b>N/A</b> <b>N/A</b> <b>887</b>
--	------------------------	---

VOR-A

ELTON HENSLEY MEML (F'TT)

<div><div>▼</div><div>▲ NA</div></div> <div>Circling NA to Rwy 12 and 30. Circling Rwy 18, 24 NA at night. Use Columbia altimeter setting; when not received use Jefferson City altimeter setting and increase all MDA 80 feet, and Circling Cat C visibility ¼ SM.</div>	<div>MISSED APPROACH: Climbing left turn to 2600 on heading 270° and HLW VORTAC R-154 to AGAST INT/12.5 DME and hold.</div>
---	---

COU ASOS <b>128.45</b>	MIZZU APP CON <b>124.375 353.925</b>	UNICOM <b>122.7 (CTAF)</b>
---------------------------	---	-------------------------------



<div>Remain within 10 NM</div> <div>AGAST INT HLW 12.5</div> <div>2600</div> <div>334°</div> <div>154°</div> <div>2600</div> <div>4.7 NM</div> <div>MAFJA HLW 17.2</div> <div>2600</div> <div>hdg 270°</div> <div>HLW R-154</div> <div>AGAST INT</div>					<div>ELEV 887</div> <div>154°</div> <div>2488 X 100</div> <div>3203 X 60</div> <div>0.4% UP</div> <div>4001 X 75</div> <div>36</div> <div>MIRL Rwy 6-24 and 18-36</div> <div>REIL Rwy 6, 18, 24 and 36</div>				
CATEGORY	A	B	C	D	FAF to MAP 4.7 NM				
CIRCLING	1520-1 633 (700-1)		1560-2 673 (700-2)		NA		Knots		
						Min:Sec			
						60			180
						4:42			1:34