

APP CRS
001°

Rwy Idg
TDZE
881

Apt Elev
887

RNAV (GPS) RWY 36

ELTON HENSLEY MEML (F'TT)

RNP APCH-GPS

NA

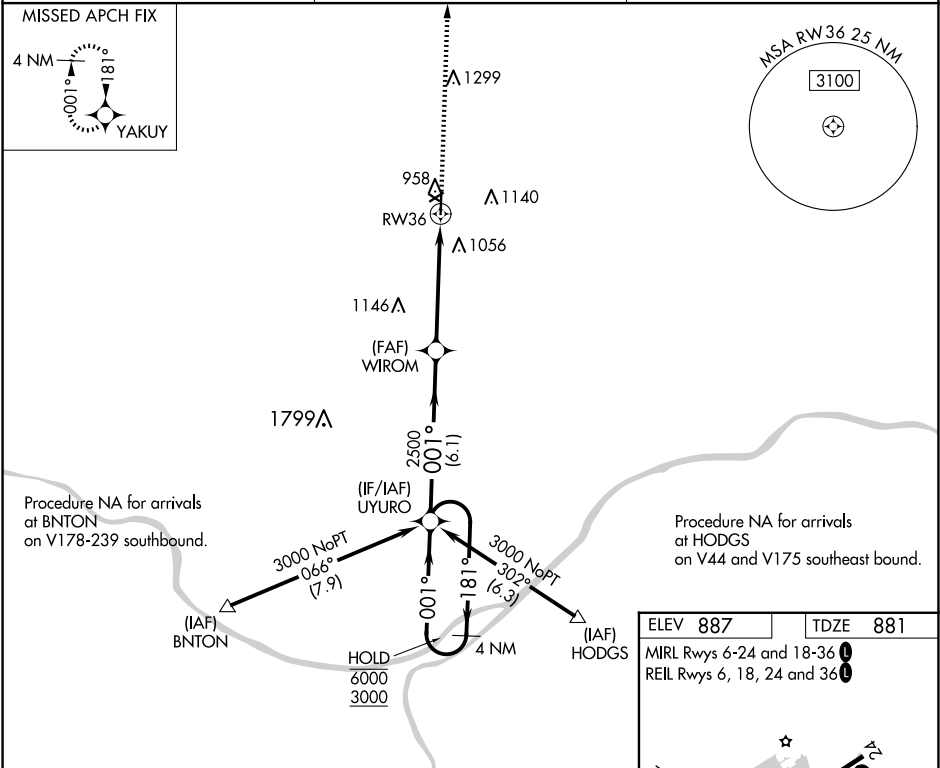
Circling NA to Rwys 12 and 30. Circling Rwy 18, 24 NA at night. Rwy 36 helicopter visibility reduction below ¼ SM NA. Use Columbia altimeter setting; when not received use Jefferson City altimeter setting and increase all MDA 100 feet. Increase LNAV Cat C visibility ¼ SM, and Circling Cat C visibility ¼ SM.

MISSED APPROACH: Climb to 3000 direct YAKUY and hold.

COU ASOS
128.45

MIZZU APP CON
124.375 353.925

UNICOM
122.7 (CTAF) 0



4 NM Holding Pattern

UYURO

3000

YAKUY

WIROM

2500

3.04° TCH 39

RW36

6.1 NM

4.9 NM

CATEGORY

A

B

C

D

LNAV MDA

1280-1

399 (400-1)

1280-1½
399 (400-1½)

NA

CIRCLING

1380-1
493 (500-1)

1480-1
593 (600-1)

1560-2
673 (700-2)

NA

ELEV 887

TDZE 881

MIRL Rwys 6-24 and 18-36

REIL Rwys 6, 18, 24 and 36

2488 X 100

2203 X 60

0.4% UP

4001 X 75

36

001°