

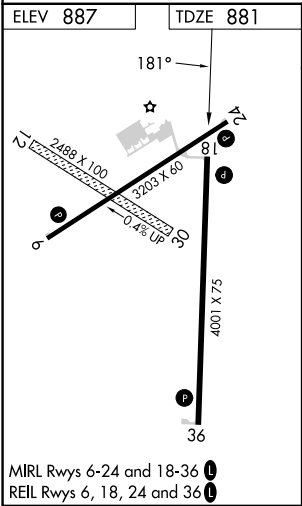
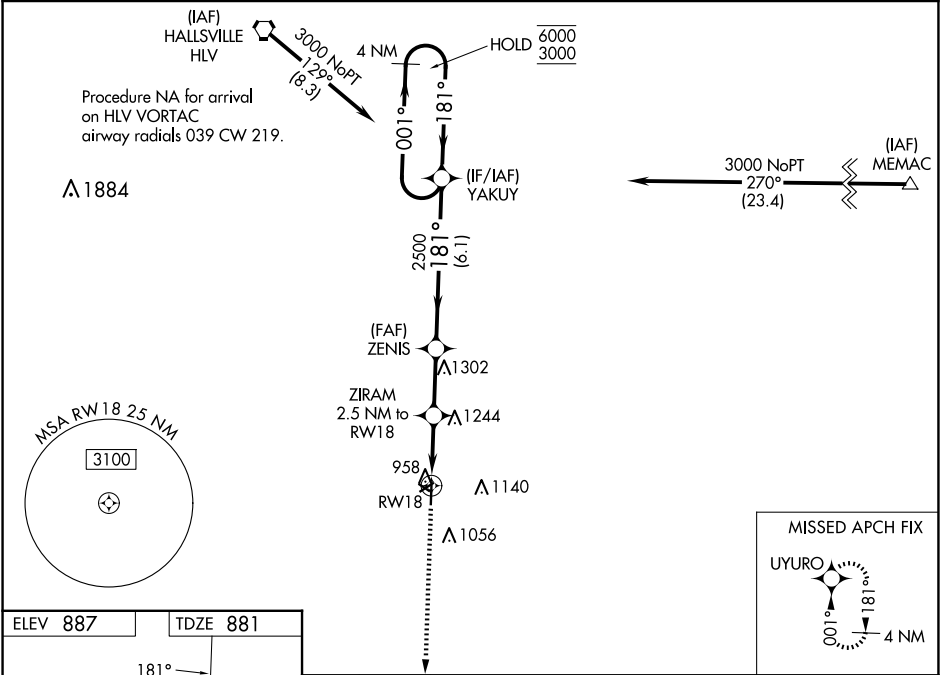
WAAS CH 42611 W18A	APP CRS 181°	Rwy Idg TDZE 881 Apt Elev 887	4001
--	------------------------	---	-------------

RNAV (GPS) RWY 18

ELTON HENSLEY MEML (F'TT')

RNP APCH.	<div><div><div>▼</div><div>NA</div></div><div>Circling NA to Rwy 12 and 30. Circling Rwy 24 NA at night. Rwy 18 helicopter visibility reduction below 1 SM NA. Baro-VNAV NA. Use Columbia altimeter setting; when not received use Jefferson City altimeter setting and increase all DA 62 feet, all MDA 80 feet, increase LPV and LNAV/VNAV all Cats visibility ¼ mile, LNAV and Circling Cat C visibility ¼ mile.</div></div>	MISSED APPROACH: Climb to 3000 direct UYURO and hold.
-----------	---	---

COU ASOS 128.45	MIZZU APP CON 124.375 353.925	UNICOM 122.7 (CTAF) 0
---------------------------	---	---------------------------------



3000	UYURO	ZENIS	YAKUY	4 NM Holding Pattern
*LNAV only	ZIRAM 2.5 NM to RW18	2500	181°	001° → 6000 ← 181° 3000
	1720*	2500		GP 3.00° TCH 42
	2.5 NM	2.4 NM	6.1 NM	
CATEGORY	A	B	C	D
LPV DA	1155-1 274 (300-1)			NA
LNAV/VNAV DA	1313-1½ 432 (500-1½)			NA
LNAV MDA	1520-1	639 (700-1)	1520-1¾ 639 (700-1¾)	NA
CIRCLING	1520-1	633 (700-1)	1560-2 673 (700-2)	NA