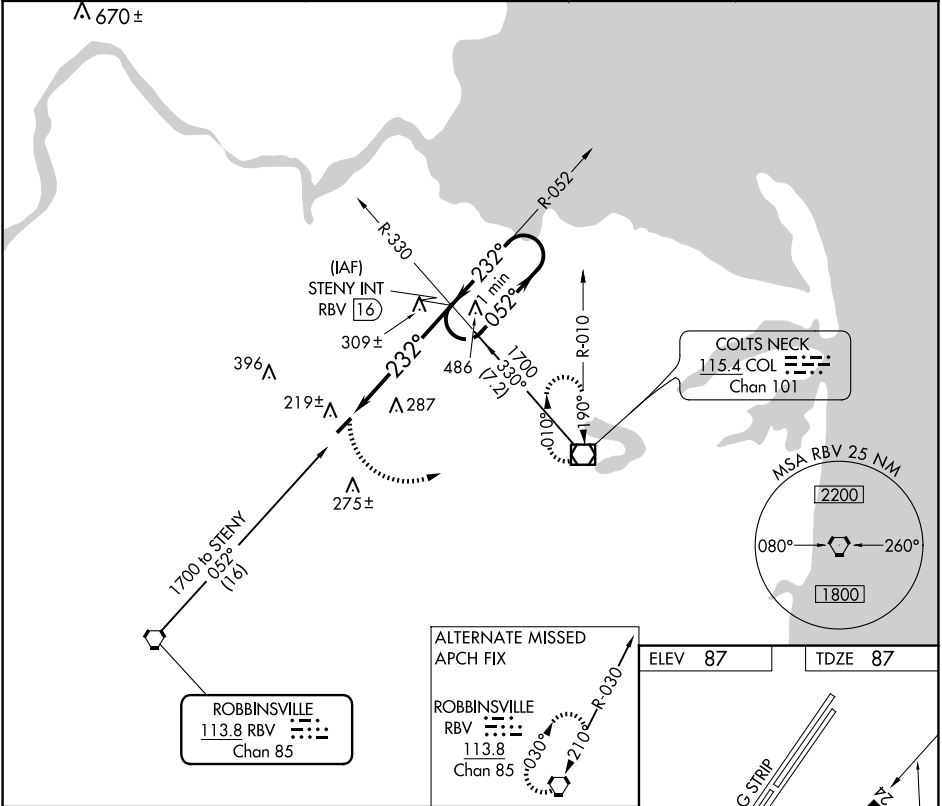


VORTAC RBV 113.8 Chan 85	APP CRS 232°	Rwy Idg TDZE 87 Apt Elev 87	3194
--	------------------------	---	-------------

VOR RWY 24
OLD BRIDGE (3N6)

<div><div>Procedure NA at night. Helicopter visibility reduction below 1 SM NA. Use Belmar/Farmingdale altimeter setting; when not received, use Wrightstown altimeter setting and increase all MDA 20 feet.</div><div>NA</div></div>	MISSED APPROACH: Climbing left turn to 2000 direct COL VOR/DME and hold.
---	--

BLM AWOS-3PT 121.625	MC GUIRE APP CON 126.475 363.8	GCO 121.725	UNICOM 123.075 (CTAF) 0
--------------------------------	--	-----------------------	--



<div><div>2000</div><div>COL</div><div></div></div>		<div><div>STENY INT RBV 16</div><div>One Minute Holding Pattern</div></div>		
<div><div>RBV 10.5</div><div>232°</div><div>5.6 NM</div></div>		<div><div>052°</div><div>232°</div><div>1700</div></div>		
CATEGORY	A	B	C	D
S-24	600-1	513 (600-1)	NA	
CIRCLING	620-1 533 (600-1)	640-1 553 (600-1)	NA	

ELEV 87	TDZE 87
<div><div>DRAG STRIP</div><div>0.6% UP</div><div>3594 X 50</div><div>232°</div></div>	
REIL Rwy 6 and 24 0 MIRL Rwy 6-24 0	
FAF to MAP 5.6 NM	
Knots	60 90 120 150 180
Min:Sec	5:36 3:44 2:48 2:14 1:52

NE-2, 07 AUG 2025 to 04 SEP 2025

NE-2, 07 AUG 2025 to 04 SEP 2025