

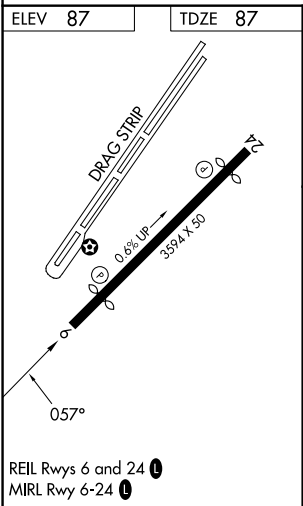
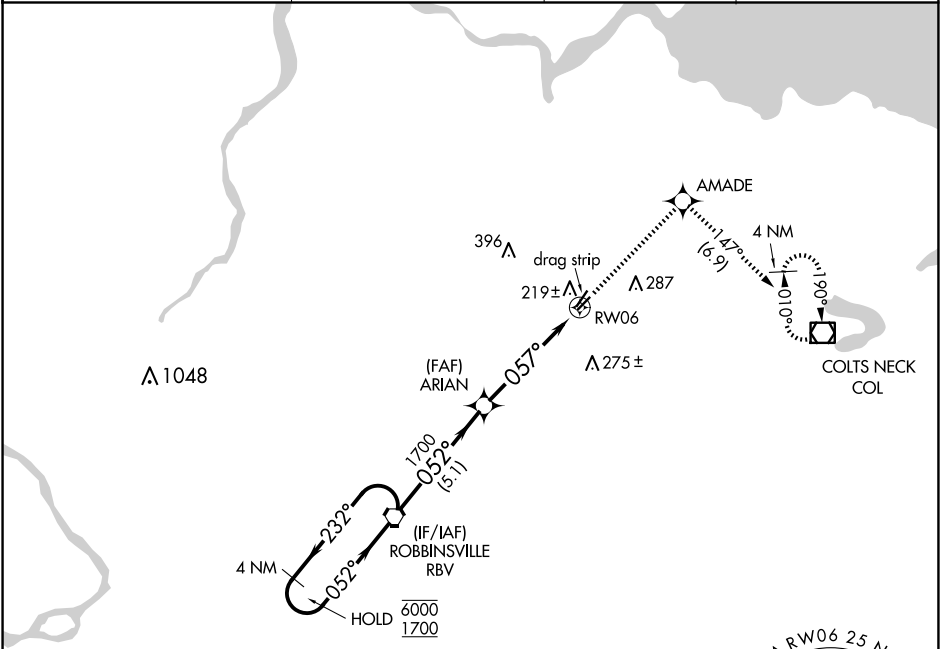
APP CRS	Rwy Idg	2994
057°	TDZE	87
	Apt Elev	87

RNAV (GPS) RWY 6

OLD BRIDGE (3N6)

RNP APCH.	Procedure NA at night. Rwy 6 helicopter visibility reduction below 1 SM NA. Use Belmar/Farmingdale altimeter setting; when not received, use Wrightstown altimeter setting and increase all MDA 20 feet.	MISSED APPROACH: Climb to 2000 direct AMADE and on track 147° to COL VOR/DME and hold.
NA		

BLM AWOS-3PT 121.625	MC GUIRE APP CON 126.475 363.8	GCO 121.725	UNICOM 123.075 (CTAF) 1
-------------------------	-----------------------------------	----------------	----------------------------



NoPT for arrival on RBV VORTAC airway radials 238 CW 289.				<div>MSA 10 NM</div> <div>2900</div> <div></div>			
Visual Segment - Obstacles.				2000 	AMADE 	tr 147°	COL
4 NM Holding Pattern							
RBV VORTAC				ARIAN			
6000 ← 232° 1700 052° →				1700 057° RW06			
				5.1 NM 4.9 NM			
CATEGORY	A		B		C		D
LNAV MDA	660-1 573 (600-1)				NA		

NE-2, 07 AUG 2025 to 04 SEP 2025

NE-2, 07 AUG 2025 to 04 SEP 2025