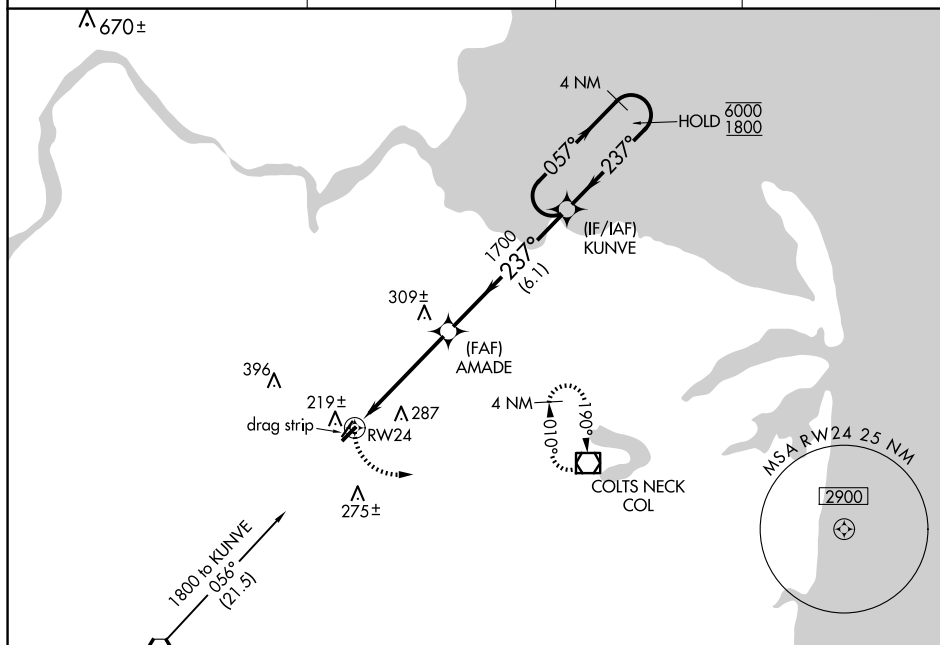


RNAV (GPS) RWY 24

T Procedure NA at night. Rwy 24 helicopter visibility reduction below 1 SM NA.
A NA Use Belmar/Farmingdale altimeter setting; when not received, use Wrightstown altimeter setting and increase all MDA 20 feet.

MISSED APPROACH: Climbing left turn to 2000 direct COL VOR/DME and hold.

UNICOM
123.075 (CTAF) **L**ROBBINSVILLE
RBV

TDZE 87

2000

COL


Visual Segment - Obstacles.

KUNVE

4 NM
Holding Pattern

AMADF

0

4000

1800

RW24

1700

1

1 NM —

CATEGORY

A

--	--

B

--	--

LNAV MD

62

533

-1)

1

20-

--	--

40-

--	--

The diagram shows a perspective view of the track layout. A straight section labeled "DRAG STRIP" leads into a turn labeled "237°". The turn is marked with a "0.6% UP" sign and a "3594 X 50" dimension. The track surface is depicted with a grid pattern, and the turn is indicated by a curved arrow.

REIL Rwy 6 and 24 **L**
MIRL Rwy 6-24 **L**