

WAAS CH 72827 W09A	APP CRS 088°	Rwy Ldg TDZE Apt Elev	4218 1021 1021
--	------------------------	-----------------------------	---

RNAV (GPS) RWY 9
UNION COUNTY (MRT)

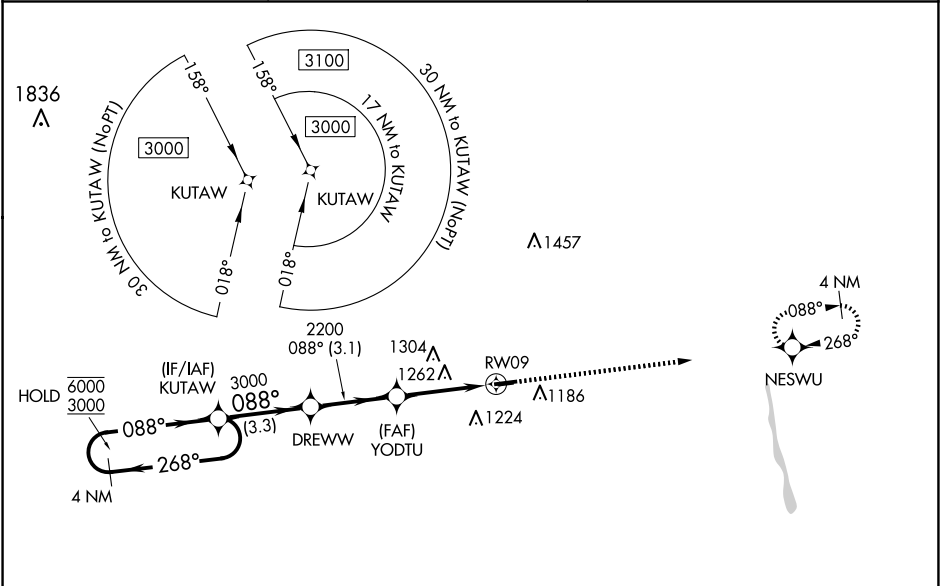
RNP APCH - GPS.

▼
▲

When Circling to Rwy 27 at night, operational VGSi required, remain on or above VGSi glidepath until threshold. For uncompensated Baro-VNAV systems, LNAV/VNAV NA below -17°C or above 54°C. Circling NA to Rwy 8 and 26.

MISSED APPROACH: Climb to 3000 direct NESWU and hold.

AWOS-3 119.275	COLUMBUS APP CON 125.95 317.775	UNICOM 122.8 (CTAF) ❶
--------------------------	---	---------------------------------



ELEV 1021

TDZE 1021

4 NM Holding Pattern

VGSi and RNAV glidepath not coincident (VGSi Angle 3.00/TCH 25).

3000 NESWU

KUTAW DREWW YODTU

6000 3000 268° 088° 088° 3000 088° 2200 1.5 NM to RW09 2.1 NM 1.5 NM

GP 3.00° TCH 40

CATEGORY	A	B	C	D
LPV DA	1285-7⁄8 264 (300-7⁄8)			
LNAV/VNAV DA	1432-1 1⁄8 411 (500-1 1⁄8)			
LNAV MDA	1520-1 499 (500-1)	1520-1 3⁄8 499 (500-1 3⁄8)		
CIRCLING	1520-1 499 (500-1)	1540-1 519 (600-1)	1620-1 1⁄2 599 (600-1 1⁄2)	1620-2 599 (600-2)

MIRL Rwy 9-27 ❶

REIL Rwy 9 and 27 ❶

EC-2, 07 AUG 2025 to 04 SEP 2025

EC-2, 07 AUG 2025 to 04 SEP 2025