

APP CRS
095°

Rwy Idg
4498

TDZE
161

Apt Elev
160

RNAV (GPS) RWY 9

WILSON INDUSTRIAL AIR CENTER (W03)

▼

NA

DME/DME RNP-0.3 NA. Procedure NA at night. Visibility reduction by helicopters NA. Obtain local altimeter setting on CTAF; when not received use Rocky Mount altimeter setting.

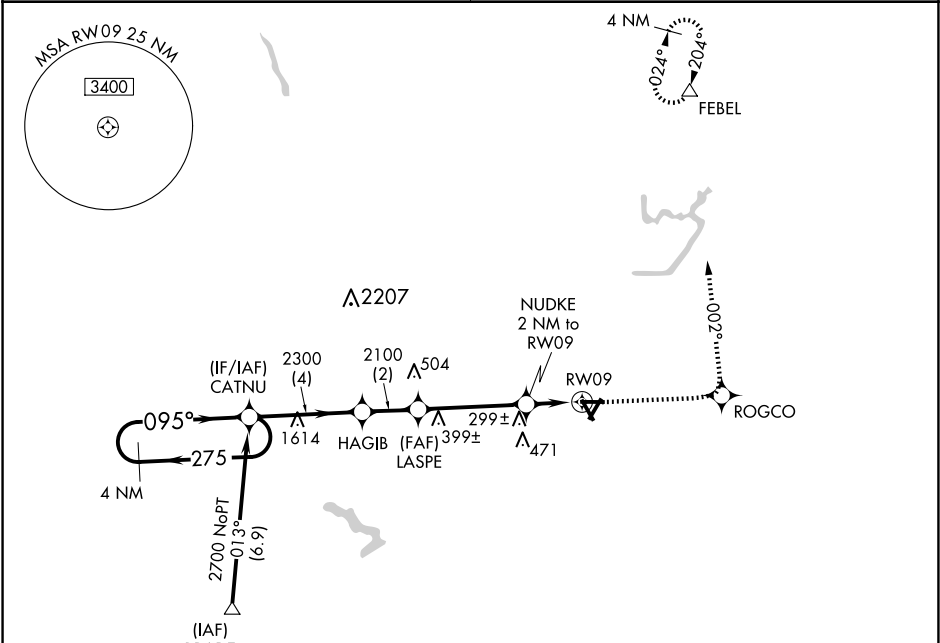
MISSED APPROACH: Climb to 2500 direct ROGCO then left turn via 002° track to FEBEL and hold.

WASHINGTON CENTER

123.85 279.65

UNICOM

123.0 (CTAF) 0



ELEV 160

TDZE 161

4 NM Holding Pattern

CATNU

2700

275°

095°

HAGIB

2300

3.05°

TCH 40

LASPE

2100

820

NUDKE 2 NM to RW09

RW09

2500

ROGCO

FEBEL

002° tr

095° to RW09

CATEGORY	A	B	C	D
RNAV MDA	560-1	399 (400-1)		560-1¼ 399 (400-1¼)
CIRCLING	660-1	500 (500-1)	780-1¾ 620 (700-1¾)	780-2 620 (700-2)
ROCKY MOUNT ALTIMETER SETTING MINIMUMS				
RNAV MDA	580-1	419 (500-1)	580-1¼	419 (500-1¼)
CIRCLING	680-1	520 (600-1)	800-1¾ 640 (700-1¾)	800-2 640 (700-2)

REIL Rwy 3 and 21 0

MIRL Rwy 3-21 0