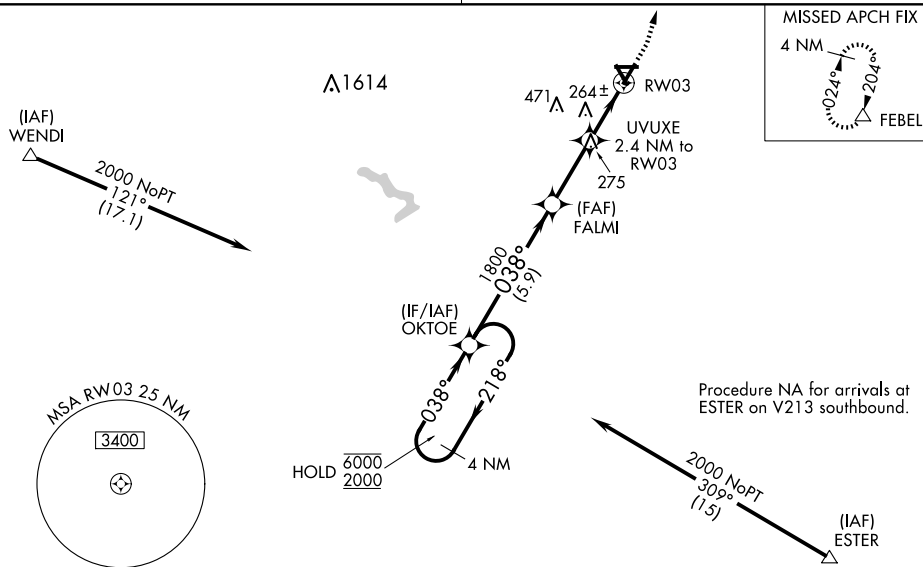


RNAV (GPS) RWY 3
WILSON INDUSTRIAL AIR CENTER (W03)

NA Baro-VNAV NA when using Rocky Mount altimeter setting. For uncompensated Baro-VNAV systems, LNAV/VNAV NA below -15°C or above 54°C. Obtain local altimeter setting on CTAF; when not received, use Rocky Mount altimeter setting: increase LPV DA to 421 and visibility all Cats ½ SM; increase LNAV/VNAV DA to 439; increase all MDA 20 feet and LNAV visibility Cats C and D ½ SM. Circling Rwy 9, 15, 27, 33 NA at night.

MISSED APPROACH: Climb to 700, then climbing left turn to 2500 direct FEBEL and hold.

UNICOM
123.0 (CTAF) **L**

SE-2, 07 AUG 2025 to 04 SEP 2025

