

WAAS CH 72739 W21A	APP CRS 204°	Rwy Idg 4500 TDZE 157 Apt Elev 160
--	------------------------	---

RNAV (GPS) RWY 21

WILSON INDUSTRIAL AIR CENTER (W03)

RNP APCH.

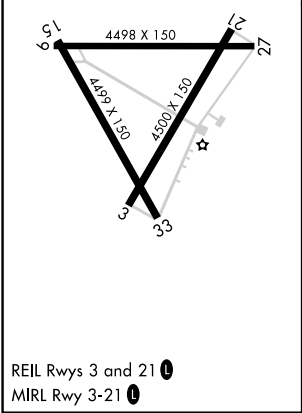
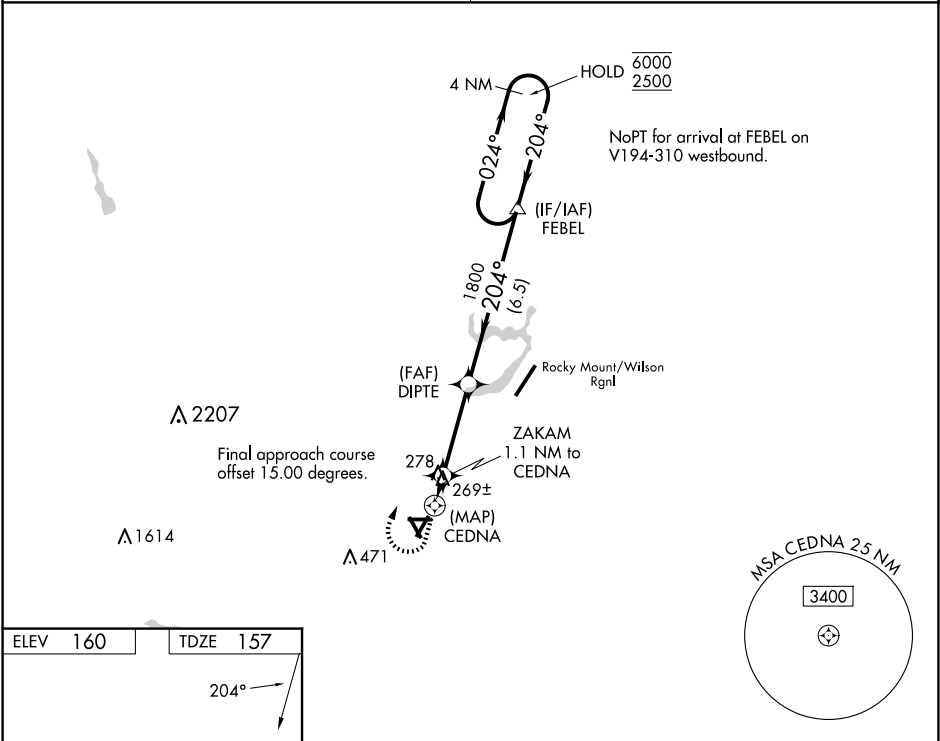
⚠

NA

Circling Rwy 9, 15, 27, 33 NA at night. Obtain local altimeter setting on CTAF; when not received, use Rocky Mount altimeter setting and increase all MDA 20 feet; increase LP Cats C and D visibility 1/8 SM. Rwy 21 helicopter visibility reduction below 3/4 SM NA.

MISSED APPROACH: Climb to 1000, then climbing right turn to 2500 direct FEBEL and hold.

WASHINGTON CENTER 123.85 279.65	UNICOM 123.0 (CTAF) 0
---	---------------------------------



1000 ↑		2500 ↗		FEBEL △		4 NM Holding Pattern	
CEDNA		ZAKAM 1.1 NM to CEDNA		DIPTE		FEBEL	
CEDNA		3.04° TCH 40		204°		024° → 6000 ← 204° 2500	
0.5		1.1 NM		3.4 NM		6.5 NM	
CATEGORY		A		B		C	
LP MDA		520-1		363 (400-1)			
LNAV MDA		540-1		383 (400-1)		540-1½ 383 (400-1½)	
CIRCLING		660-1		500 (500-1)		780-1¾ 620 (700-1¾) 780-2 620 (700-2)	

SE-2, 07 AUG 2025 to 04 SEP 2025

SE-2, 07 AUG 2025 to 04 SEP 2025