

APP CRS  
158°

Rwy Idg  
4499

TDZE  
161

Apt Elev  
160

RNAV (GPS) RWY 15

WILSON INDUSTRIAL AIR CENTER (W03)

▽

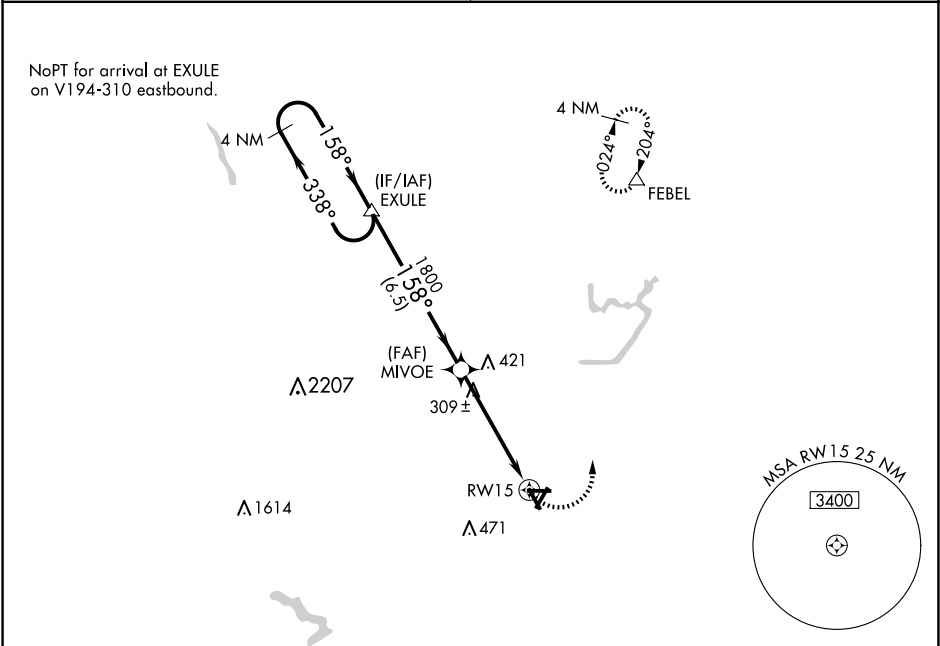
NA

DME/DME RNP-0.3 NA. Procedure NA at night. Visibility reduction by helicopters NA. Obtain local altimeter setting on CTAF; when not received use Rocky Mount altimeter setting.

MISSED APPROACH: Climbing left turn to 2500 direct FEBEL and hold.

WASHINGTON CENTER  
123.85 279.65

UNICOM  
123.0 (CTAF) 0



4 NM Holding Pattern

2500 FEBEL

EXULE

MIVOE

1800

3.04° TCH 40

6.5 NM

5 NM

RWY 15

CATEGORY	A	B	C	D
LNAV MDA	560-1	399 (400-1)		560-1¼ 399 (400-1¼)
CIRCLING	660-1	500 (500-1)	780-1¾ 620 (700-1¾)	780-2 620 (700-2)
ROCKY MOUNT ALTIMETER SETTING MINIMUMS				
LNAV MDA	580-1	419 (500-1)	580-1¼	419 (500-1¼)
CIRCLING	680-1	520 (600-1)	800-1¾ 640 (700-1¾)	800-2 640 (700-2)

ELEV 160

TDZE 161

158° to RWY 15

4498 X 150

4499 X 150

4500 X 150

REIL Rwy 3 and 21 0

MIRL Rwy 3-21 0