

CARO, MICHIGAN

AL-6375 (FAA)

25107

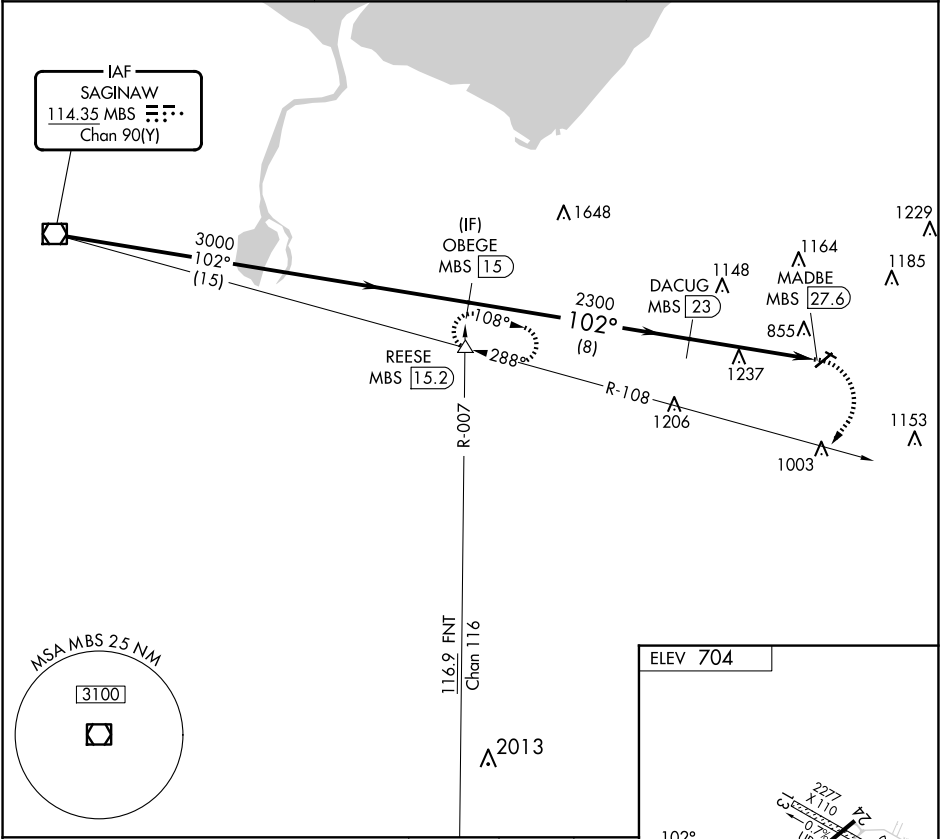
VOR/DME MBS	APP CRS	Rwy Idg	N/A
114.35	102°	TDZE	N/A
Chan 90 (Y)		Apt Elev	704

VOR-A

TUSCOLA AREA (CFS)

DME required.	MISSED APPROACH: Climbing right turn to 3000 on heading 220° and on MBS VOR/DME R-108 to REESE INT/15.2 DME and hold.
<div><div></div><div></div></div> Circling NA to Rwys 13 and 31. Procedure NA at night.	

AWOS-3 119.275	GREAT LAKES APP CON ★ 120.95 235.625	UNICOM 123.0 (CTAF) 0
-------------------	---	--------------------------



MBS VOR/DME	OBEGE MBS (15)	3000	hdg 220°	REESE
3000	3000	2300		
15 NM	8 NM	4.6 NM		
CATEGORY	A	B	C	D
CIRCLING	1540-1¼	836 (900-1¼)	1600-2¾ 896 (900-2¾)	NA

MIRL Rwy 6-24 0

CARO, MICHIGAN
Amdt 7A 17APR25

TUSCOLA AREA (CFS)

43°28'N-83°27'W

VOR-A

EC-1, 07 AUG 2025 to 04 SEP 2025

EC-1, 07 AUG 2025 to 04 SEP 2025