

VORTAC ODI

117.9

Chan 126

APP CRS

184°

Rwy Idg

TDZE

Apt Elev

N/A

N/A

1179

VOR-A

HOUSTON COUNTY (CHU)

DME required.

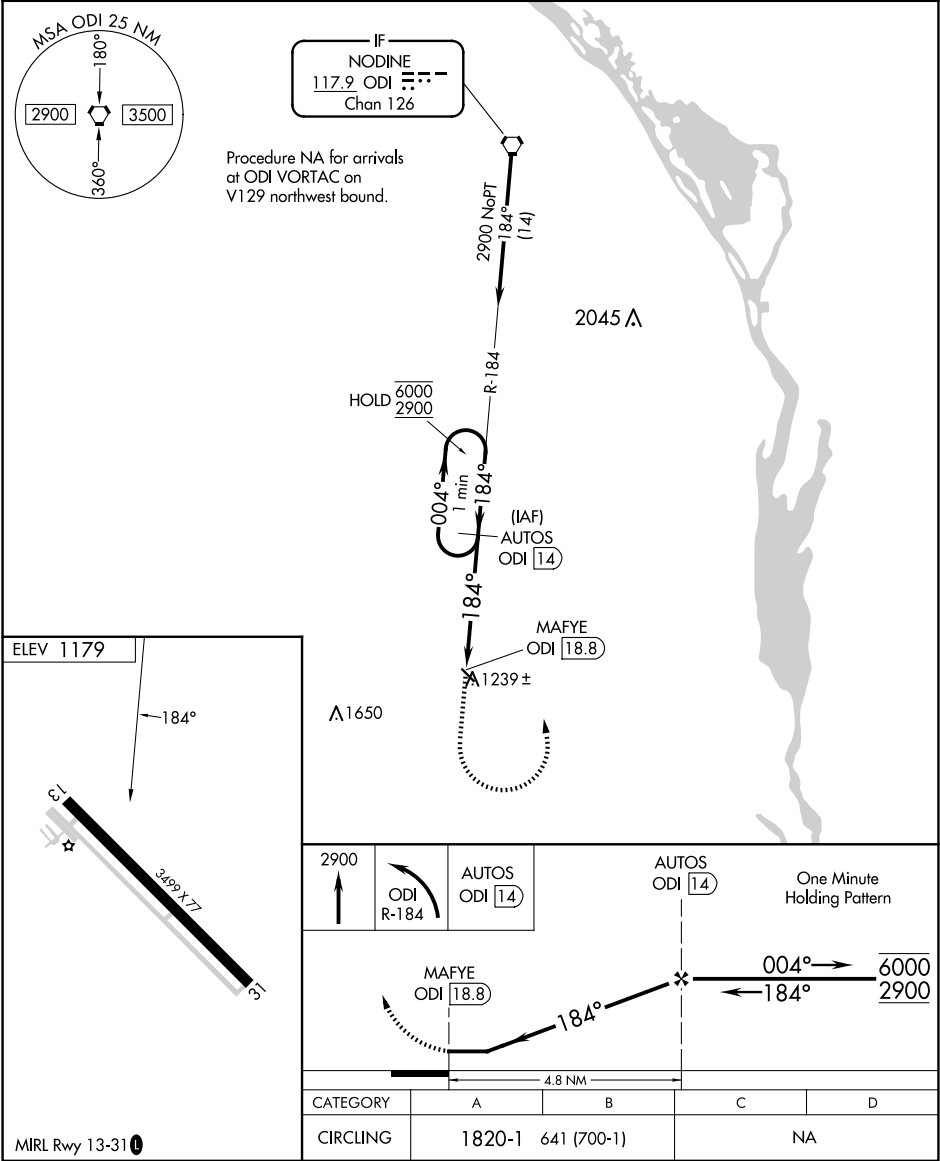
▼

▲ NA

Use La Crosse Rgnl altimeter setting.  
Procedure NA at night.

MISSED APPROACH: Climb to 2900 then left turn on ODI  
VORTAC R-184 to AUTOS/ODI 14 DME and hold.

LSE ASOS 124.95	MINNEAPOLIS CENTER 128.6 363.0	CTAF 122.9 0
--------------------	-----------------------------------	-----------------



NC-1, 07 AUG 2025 to 04 SEP 2025

NC-1, 07 AUG 2025 to 04 SEP 2025