

APP CRS  
**184°**

Rwy Idg  
TDZE  
Apt Elev

**N/A**  
**N/A**  
**1179**

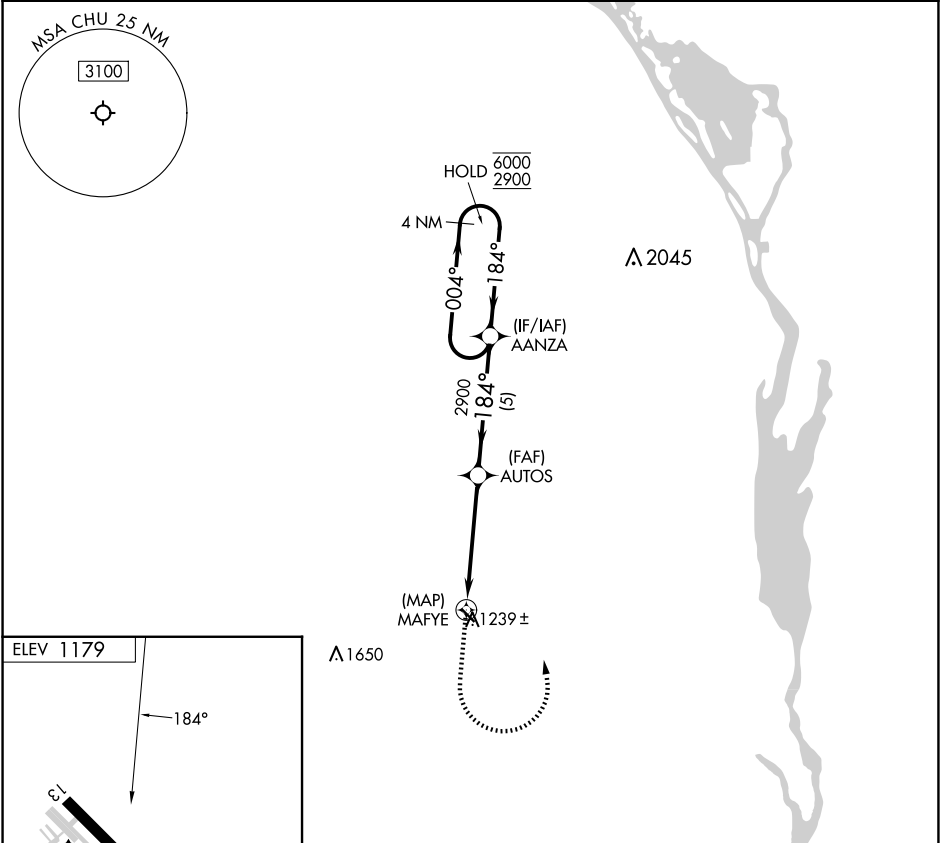
**RNAV (GPS)-B**  
HOUSTON COUNTY (CHU)

RNP APCH - GPS.

Procedure NA at night. Rwy 13 and 31 helicopter visibility reduction below 1 SM NA. Use La Crosse Rgnl altimeter setting.

MISSED APPROACH: Climb to 2900 then left turn direct AANZA and hold.

LSE ASOS <b>124.95</b>	MINNEAPOLIS CENTER <b>128.6 363.0</b>	CTAF <b>122.9 0</b>
---------------------------	--	------------------------



ELEV 1179

184°

13

31

3499 X 77

2900	AANZA	AUTOS	AANZA	4 NM Holding Pattern
MAFYE	2900	184°	004°	6000 2900
4.8 NM	5 NM			
CATEGORY	A	B	C	D
CIRCLING	1820-1	641 (700-1)	NA	

NC-1, 07 AUG 2025 to 04 SEP 2025

NC-1, 07 AUG 2025 to 04 SEP 2025