

## COPTER VOR RWY 23

VOR/DME CKV <b><u>110.6</u></b> Chan <b>43</b>	APCH CRS <b>227°</b>	Rwy Idg <b>5000</b> TDZE <b>587</b> Arpt Elev <b>596</b>
--	-------------------------	--

[USA]

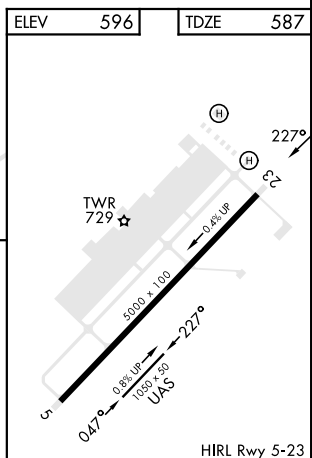
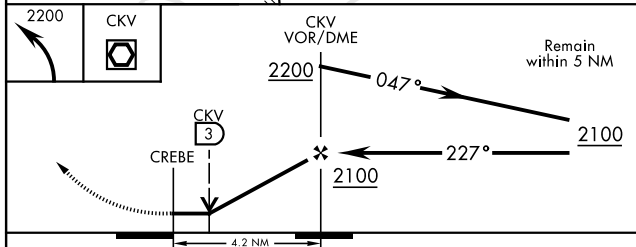
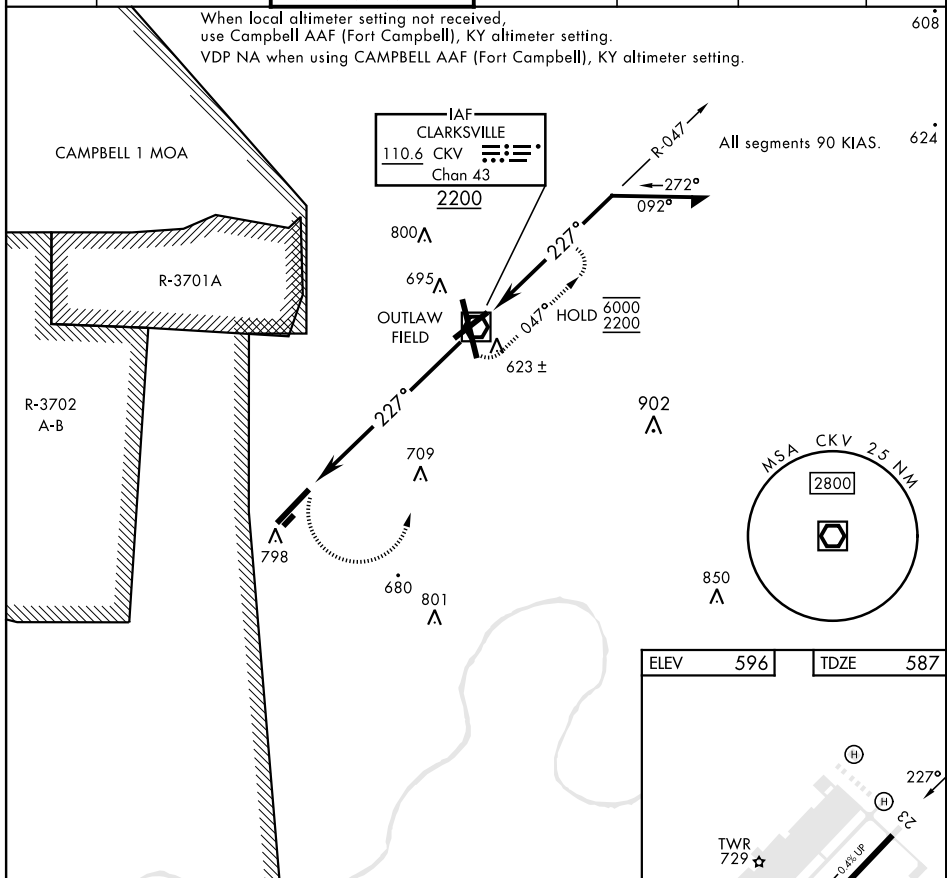
SABRE AAF (FORT CAMPBELL) (KEOD)

RADAR required

**MISSED APPROACH:** Climbing left turn to 2200 direct CKV VOR/DME and hold.

ATIS 306.5	CAMPBELL APP CON 134.35 307.025	TOWER ★ 124.675 (CTAF) 290.45	GND CON 142.975 267.3	CLNC DEL 237.6	EAGLE RADIO 139.9 285.7	ASR
---------------	------------------------------------	----------------------------------	--------------------------	-------------------	----------------------------	-----

When local altimeter setting not received,  
use Campbell AAF (Fort Campbell), KY altimeter setting.  
VDP NA when using CAMPBELL AAF (Fort Campbell), KY altimeter setting.



CATEGORY	COPTER					Knots	45	60	75	90	105
H-23	1060-1	473	(500-1)			Min:Sec	5:36	4:12	3:22	2:48	2:24

CLARKSVILLE, TENNESSEE

36°34'N-87°29'W

SABRE AAF (FORT CAMPBELL) (KEOD)

Amdt 7 07SEP23

## COPTER VOR RWY 23

SE-1, 07 AUG 2025 to 04 SEP 2025

SE-1, 07 AUG 2025 to 04 SEP 2025