

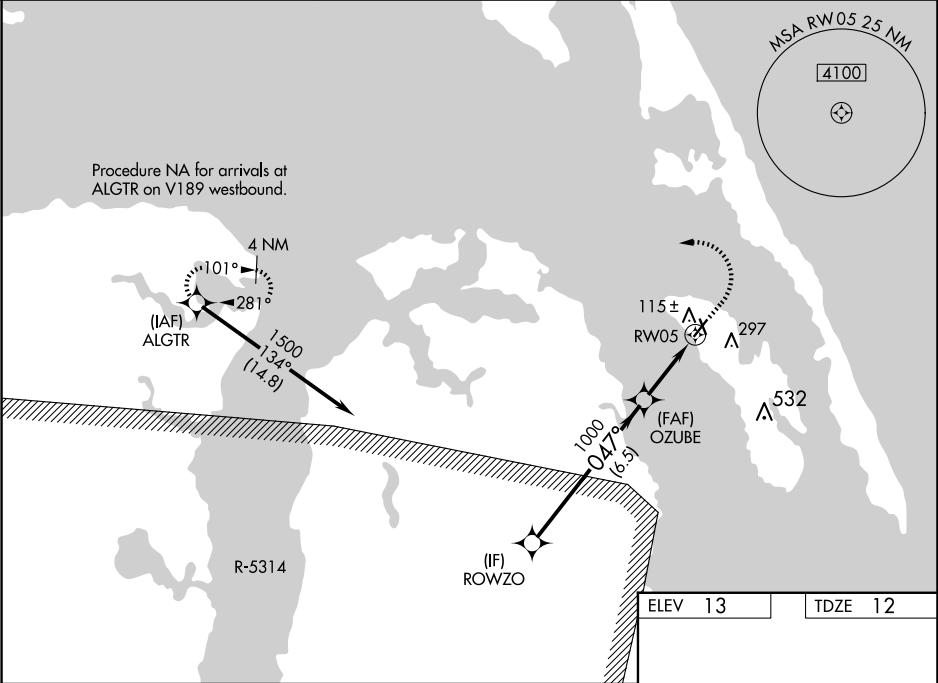
WAAS CH 72626 W05A	APP CRS 047°	Rwy Idg TDZE 12 Apt Elev 13	4001
--	------------------------	---	-------------

RNAV (GPS) RWY 5

DARE COUNTY RGNL (MQI)

RNP APCH - GPS.	MISSED APPROACH: Climb to 500 then climbing left turn to 3000 direct ALGTR and hold.
<div><div>▼</div><div>▲</div></div> <div>Circling Rwy 17, 23, 35 NA at night. For uncompensated Baro-VNAV systems, LNAV/VNAV NA below -5°C or above 34°C.</div>	

AWOS-3 128.275	CHERRY POINT APP CON 124.725 350.35	UNICOM 122.8 (CTAF) 0
--------------------------	---	---------------------------------



VGSI and RNAV glidepath not coincident (VGSI Angle 3.00/TCH 30).				
ROWZO				
1500				
047°				
OZUBE				
1000				
1.3 NM to RW05				
RW05				
GP 3.00° TCH 45				
6.5 NM				
1.7 NM				
1.3 NM				
CATEGORY	A	B	C	D
LPV DA	262-¾	250 (300-¾)		NA
LNAV/VNAV DA	347-1	335 (400-1)		NA
LNAV MDA	460-1	448 (500-1)	460-1⅜ 448 (500-1⅜)	NA
CIRCLING	600-1	587 (600-1)	600-1½ 587 (600-1½)	NA

