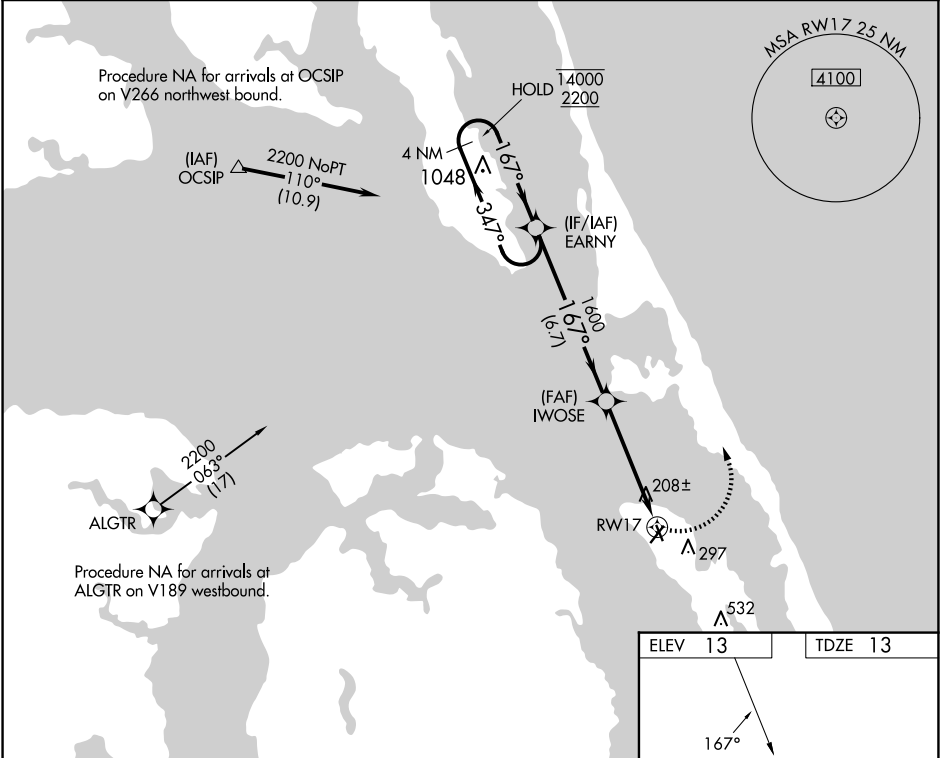


APP CRS 167°	Rwy Idg	3013
	TDZE	13
	Apt Elev	13

RNAV (GPS) RWY 17

DARE COUNTY RGNL (MQI)

RNP APCH - GPS.		MISSED APPROACH: Climbing left turn to 2200 direct EARNY and hold.
<div><div><div>▼</div><div>▲</div></div></div>	Circling Rwy 23, 35 NA at night. Rwy 17 helicopter visibility reduction below 1 SM NA. Straight-in and Circling Rwy 17 NA at night.	
AWOS-3 128.275	CHERRY POINT APP CON 124.725 350.35	UNICOM 122.8(CTAF) 0



Visual Segment - Obstacles.

4 NM Holding Pattern

EARNY

IWOSE

RW17

14000

2200

347°

167°

167°

1600

6.7 NM

4.8 NM

2200

EARNY

CATEGORY	A	B	C	D
LNAV MDA	460-1	447 (500-1)	460-1 ³ / ₈ 447 (500-1 ³ / ₈)	NA
<div>CIRCLING</div>	600-1	587 (600-1)	600-1 ¹ / ₂ 587 (600-1 ¹ / ₂)	NA

ELEV 13

TDZE 13

167°

REIL Rwy 5 and 23 0

MIRL Rwy 5-23 and 17-35 0