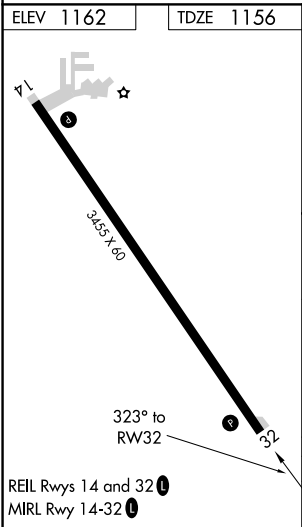
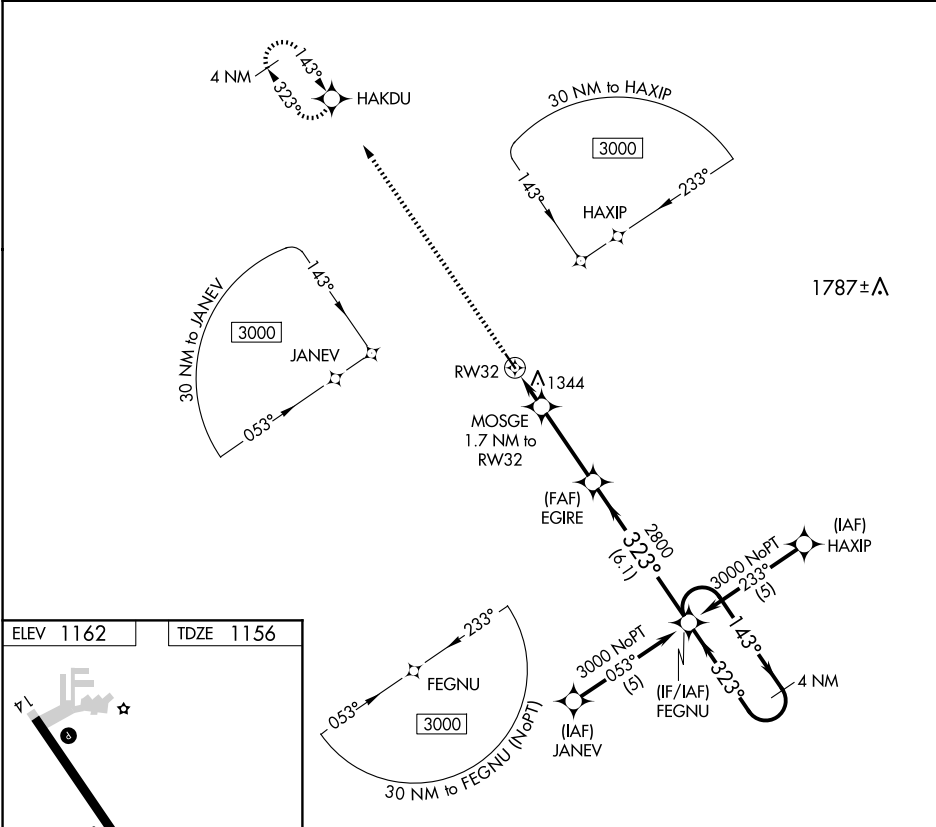


APP CRS	Rwy Idg	3455
323°	TDZE	1156
	Apt Elev	1162

RNAV (GPS) RWY 32
CLARION MUNI (CAV)

RNP APCH. When local altimeter setting not received, use Fort Dodge altimeter setting and increase all MDA 60 feet. Rwy 32 helicopter visibility reduction below ¾ SM NA.	MISSED APPROACH: Climb to 3000 direct HAKDU and hold.
--	---

AWOS-3 126.575	MINNEAPOLIS CENTER 134.0 288.3	UNICOM 122.8 (CTAF) 0
-------------------	-----------------------------------	--------------------------



3000	HAKDU	VGSI and descent angles not coincident (VGSI Angle 3.00/TCH 43).	FEGNU	4 NM Holding Pattern
MOSGE 1.7 NM to RW32	EGIRE	3.04° TCH 40	2800	3000
1740	3.3 NM	6.1 NM	143°	323°
CATEGORY	A	B	C	D
LNAV MDA	1600-1	444 (500-1)	NA	NA

NC-3, 07 AUG 2025 to 04 SEP 2025

NC-3, 07 AUG 2025 to 04 SEP 2025