

WAAS CH 45837 W14A	APP CRS 143°	Rwy Idg TDZE 1155 Apt Elev 1157
--	------------------------	---

RNAV (GPS) RWY 14

CLARION MUNI (CAV)

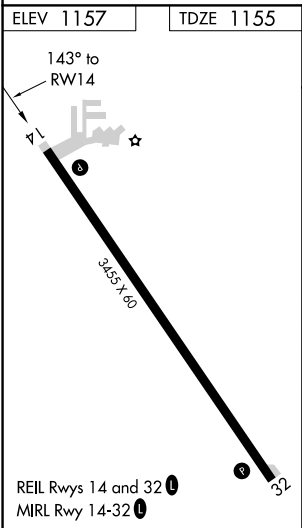
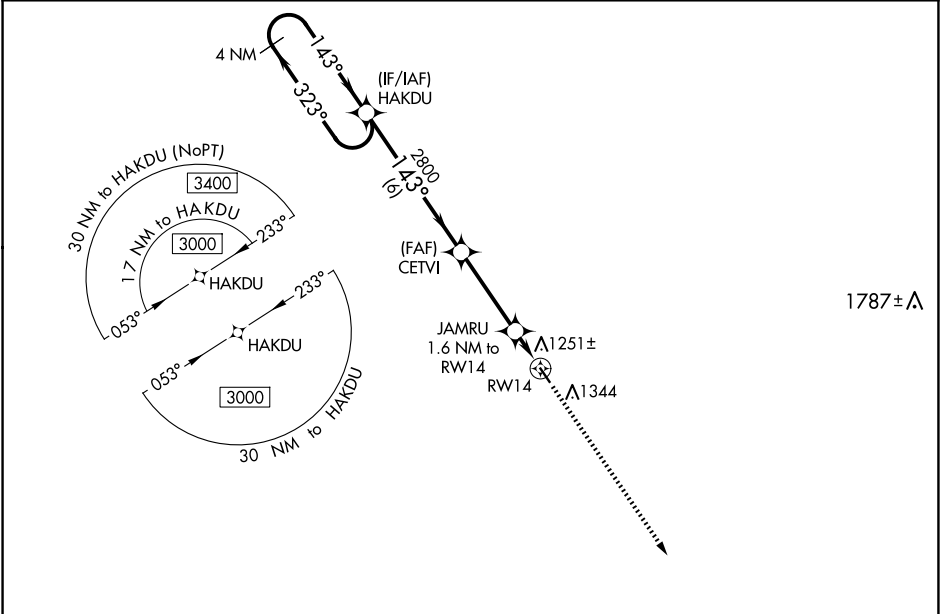
⚠

⚠

For uncompensated Baro-VNAV systems, LNAV/VNAV NA below -17°C (2°F) or above 54°C (130°F). DME/DME RNP-0.3 NA. When local altimeter setting not received, use Fort Dodge altimeter setting and increase all DA 52 feet, all MDA 60 feet; increase LPV and LNAV/VNAV all Cats visibility 1/8 mile. Baro-VNAV and VDP NA when using Fort Dodge altimeter setting. Helicopter visibility reduction below 3/4 SM NA.

MISSED APPROACH: Climb to 3000 direct FEGNU and hold.

AWOS-3 126.575	MINNEAPOLIS CENTER 134.0 288.3	UNICOM 122.8 (CTAF) 0
--------------------------	--	---------------------------------



VGSI and RNAV glidepath not coincident (VGSI Angle 3.00/TCH 40).

4 NM Holding Pattern	HAKDU	CETVI	JAMRU 1.6 NM to RW14	FEGNU
3000	323°	2800	*1700	3000
GP 3.00° TCH 40	143°	143°	*1 NM to RW14	
	6 NM	3.5 NM	0.6	1 NM
CATEGORY	A	B	C	D
LPV DA	1405-1	250 (300-1)	NA	
LNAV/VNAV DA	1415-1	260 (300-1)	NA	
LNAV MDA	1520-1	365 (400-1)	NA	
CIRCLING	1680-1	523 (600-1)	NA	

NC-3, 07 AUG 2025 to 04 SEP 2025

NC-3, 07 AUG 2025 to 04 SEP 2025