

NDB/DME DUT

283

APP CRS

171°

Rwy Idg TDZE

N/A

N/A

N/A

Apt Elev

22

NDB-A

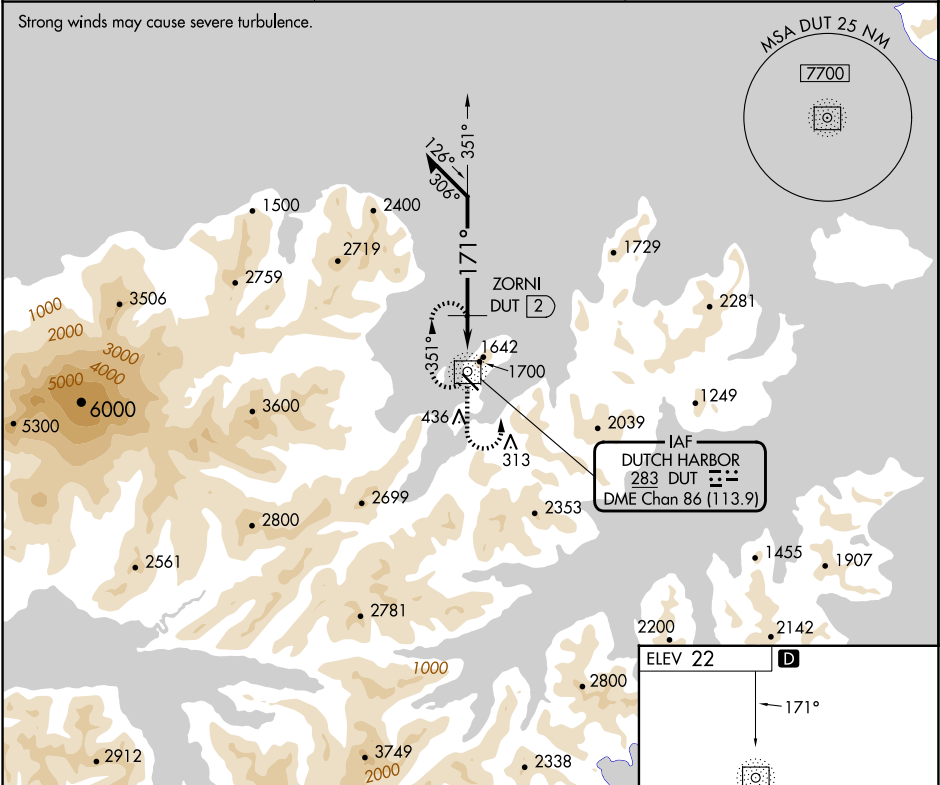
UNALASKA (DUT) (PADU)

⚠

Circling NA northeast of Rwy 13-31. Procedure NA at night. Helicopter visibility reduction below 1 SM NA. When local altimeter setting not received, use Akutan altimeter setting and increase all MDAs 100 feet. Descend to 6000 in holding pattern.

MISSED APPROACH: Climb to 3000 on DUT NDB/DME bearing 171° then climbing left turn to 4300 direct DUT NDB/DME and hold.

AWOS-3P 125.8	ANCHORAGE CENTER 121.4	CTAF 122.6 0*
------------------	---------------------------	------------------



Remain within 10 NM

DUT NDB/DME 6000

351°

171°

ZORNI DUT 2

4100

* 2900

2 NM

3000

4300

DUT

* 3000 when using Akutan altimeter setting.

CATEGORY	A	B	C	D
CIRCLING	2900-1¼ 2878 (2900-1¼)	2900-1½ 2878 (2900-1½)	2900-3	2878 (2900-3)
ZORNI FIX MINIMUMS (DME REQUIRED)				
CIRCLING	2200-1¼ 2178 (2200-1¼)	2200-1½ 2178 (2200-1½)	2320-3 2298 (2300-3)	2500-3 2478 (2500-3)

MIRL Rwy 13-31 0
REIL Rws 13 and 31 0