

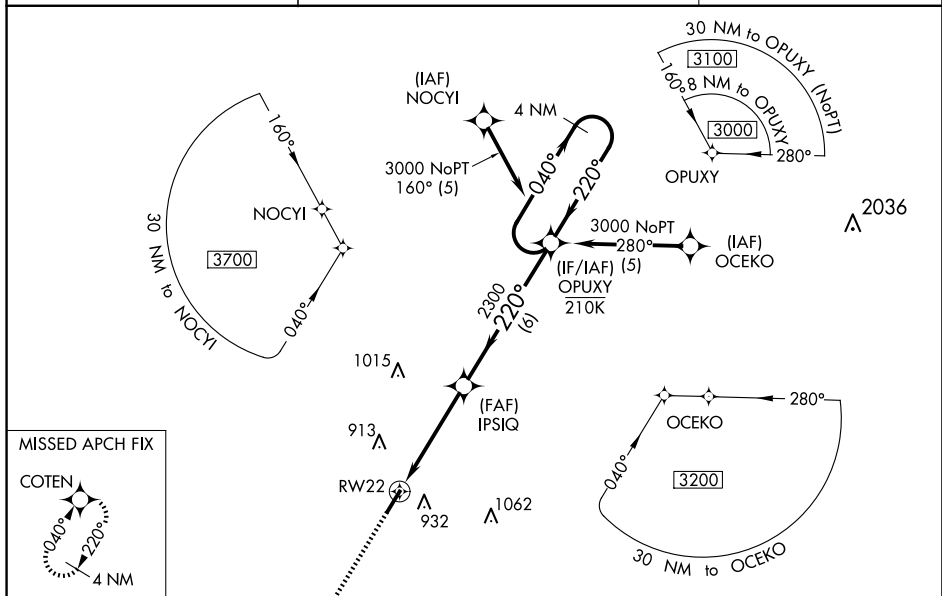
WAAS CH 40335 W22A	APP CRS 220°	Rwy Idg 5000 TDZE 615 Apt Elev 615
--	------------------------	---

RNAV (GPS) RWY 22
SILER CITY MUNI (SCR)

▼ For uncompensated Baro-VNAV systems, LNAV/VNAV NA below -16°C (4°F) or above 54°C (130°F). DME/DME RNP-0.3 NA. Procedure NA at night. Baro-VNAV NA when using Asheboro altimeter setting. Rwy 4, 22 helicopter visibility reduction below 1 SM NA. When local altimeter setting not received, use Asheboro altimeter setting: increase all DA 53 feet and all MDA 60 feet; increase LPV all Cats, LNAV/VNAV all Cats, and LNAV Cat C visibilities ½ mile; increase Circling Cat C visibility ¼ mile.

MISSED APPROACH:
Climb to 3000 direct
COTEN and hold.

AWOS-3 125.775	GREENSBORO APP CON 126.6 327.075	UNICOM 122.7 (CTAF) 0
--------------------------	--	---------------------------------



ELEV 615 TDZE 615

220°

5000x175

0.3% Up

3000

COTEN

VGS1 and RNAV glidepath not coincident (VGS1 Angle 3.50/TCH 45).

4 NM Holding Pattern

OPUXY

IPS1Q

2300

220°

040°

3000

GP 3.50° TCH 40

4.4 NM

6 NM

CATEGORY	A	B	C	D
LPV DA	954-1	339 (400-1)		NA
LNAV/VNAV DA	1140-1½	525 (600-1½)		NA
LNAV MDA	1160-1	545 (600-1)	1160-1½ 545 (600-1½)	NA
CIRCLING	1240-1	625 (700-1)	1240-1¾ 625 (700-1¾)	NA