

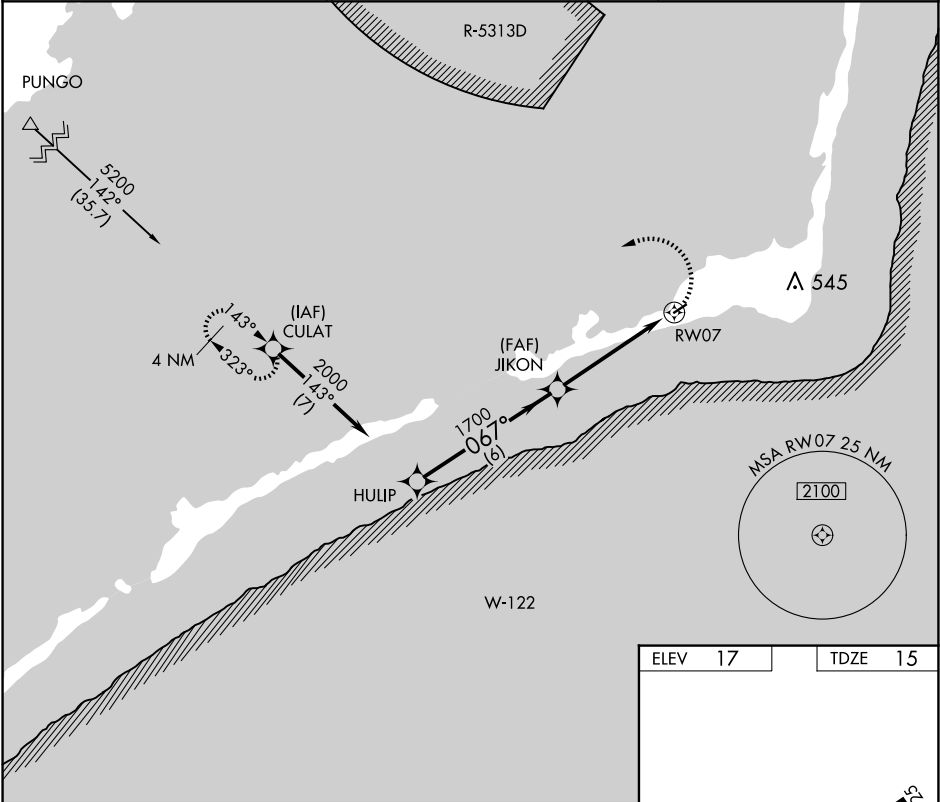
▼

▲ NA

Procedure NA at night.  
GPS or RNP-0.3 required.  
DME/DME RNP-0.3 NA.

MISSED APPROACH: Climbing left turn  
to 6000 direct CULAT WP and hold.

ASOS 118.375	CHERRY POINT APP CON 119.75 360.775	CTAF 122.9
-----------------	--	---------------



Procedure Turn NA

HULIP

JIKON

RW07

2000

1700

6000

CULAT

067°

1.4 NM to RW07

3.08°

TCH 55

6 NM

3.6 NM

1.4

CATEGORY	A	B	C	D
LNAV MDA	500-1	485 (500-1)	500-1¼ 485 (500-1¼)	NA
CIRCLING	560-1	543 (600-1)	560-1½ 543 (600-1½)	NA

067° to RW07

3002 X 75