

APP CRS  
232°

Rwy Idg  
TDZE  
17

3002  
Apt Elev  
17

RNAV (GPS) RWY 25

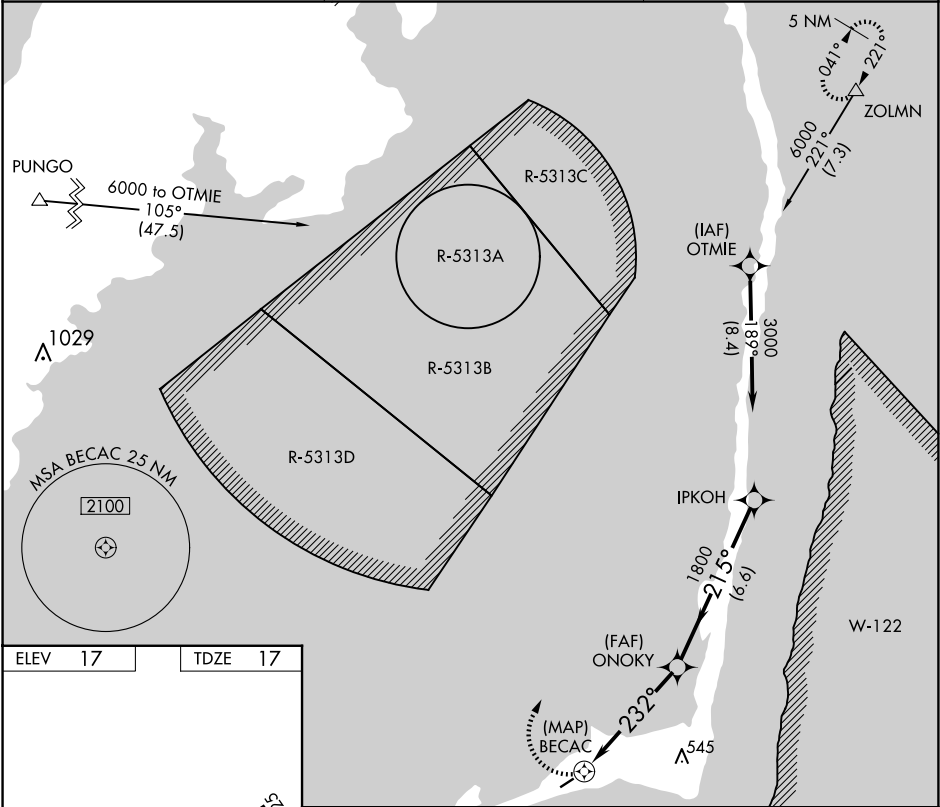
BILLY MITCHELL (HSE)

NA

Procedure NA at night.  
GPS or RNP-0.3 required.  
DME/DME RNP-0.3 NA.

MISSED APPROACH: Climbing right turn to 6000  
via course 032° to ZOLMN WP and hold.

ASOS 118.375	CHERRY POINT APP CON 119.75 360.775	CTAF 122.9
-----------------	--	---------------



ELEV 17

TDZE 17

6000

ZOLMN

crs 032°

ONOKY

IPKOH

3000

BECAC

232°

1800

215°

3000

Procedure Turn NA

0.5

5 NM

6.6 NM

CATEGORY	A	B	C	D
LNAV MDA	520-1	503 (600-1)	520-1½ 503 (600-1½)	NA
CIRCLING	560-1	543 (600-1)	560-1½ 543 (600-1½)	NA