


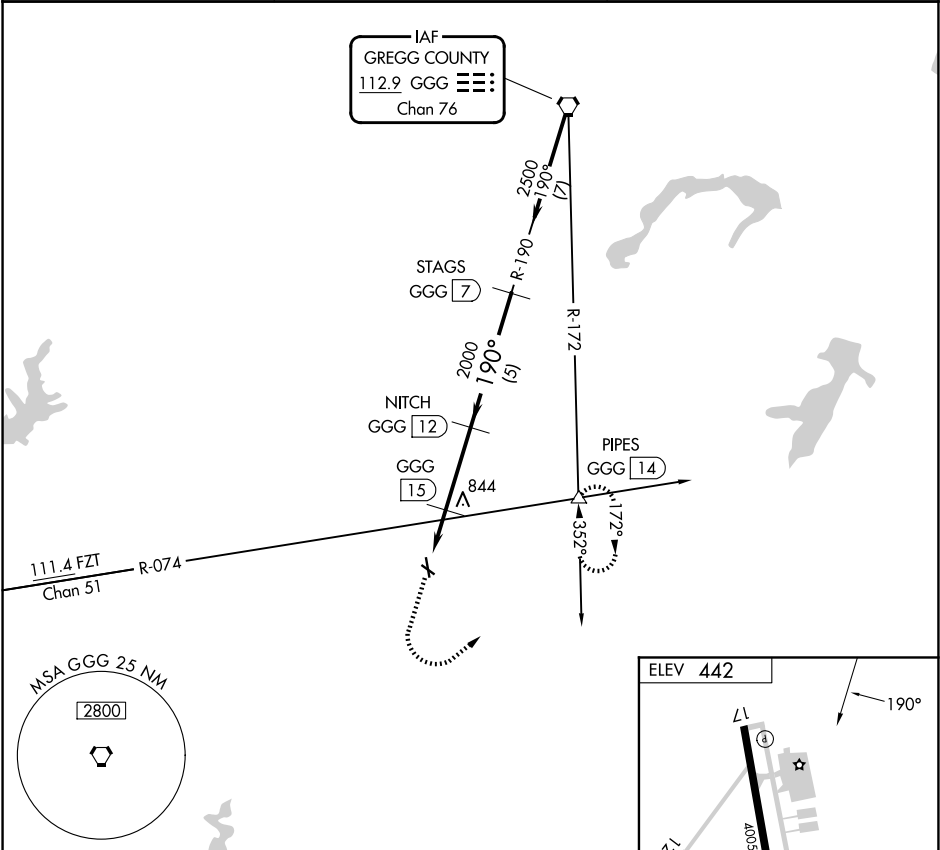
VORTAC GGG 112.9 Chan 76	APP CRS 190°	Rwy Ldg TDZE Apt Elev	N/A N/A 442	VOR/DME-A RUSK COUNTY (R.F.I)
--	------------------------	-----------------------------	--	----------------------------------



When local altimeter setting not received, use Longview altimeter setting and increase all MDAs 60 feet and Circling Cat C visibility ¼ SM.
Circling Rwy 12, 17 and 30 NA at night.

MISSED APPROACH: Climb to 1800 then climbing left turn to 2500 via heading 045° and GGG R-172 to PIPES INT/14 DME and hold.

AWOS-3 119.375	LONGVIEW APP CON ★ 124.275 257.975	UNICOM 122.8 (CTAF)
--------------------------	--	-------------------------------



1800	2500	hdg 045°	GGG R-172	PIPES GGG 14	NITCH GGG 12	STAGS GGG 7	2500
1300		2000		190°		Procedure Turn NA	
1.9 NM		3 NM		5 NM			
CATEGORY	A	B	C	D			
CIRCLING	1220-1 778 (800-1)	1220-1¼ 778 (800-1¼)	1220-2¼ 778 (800-2¼)	NA			

MIRL Rwy 17-35

SC-2, 07 AUG 2025 to 04 SEP 2025

SC-2, 07 AUG 2025 to 04 SEP 2025