

WAAS CH 86847 W35A	APP CRS 347°	Rwy Ldg 4005 TDZE 442 Apt Elev 442
--	------------------------	---

RNAV (GPS) RWY 35

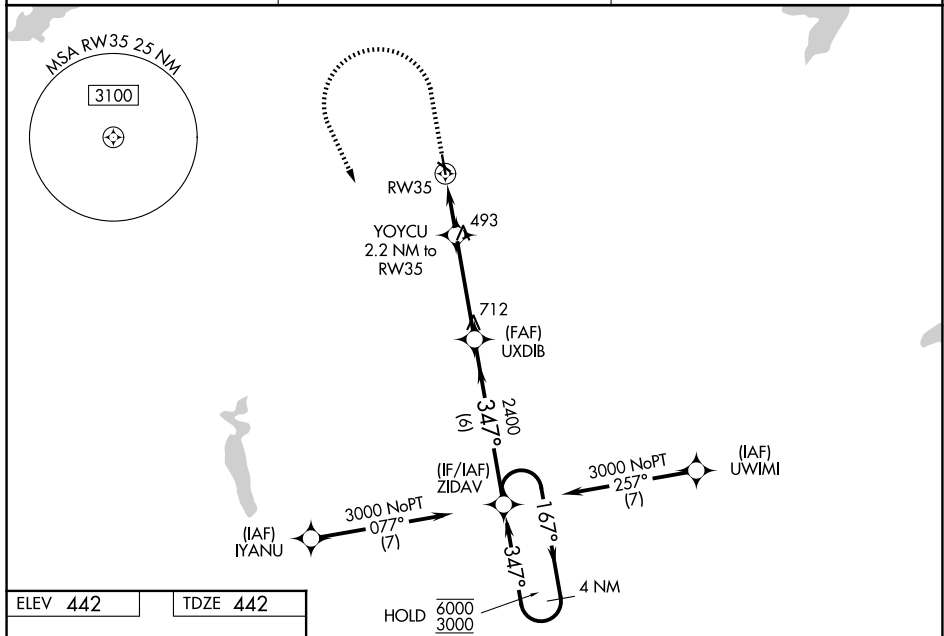
RUSK COUNTY (RFI)

RNP APCH - GPS

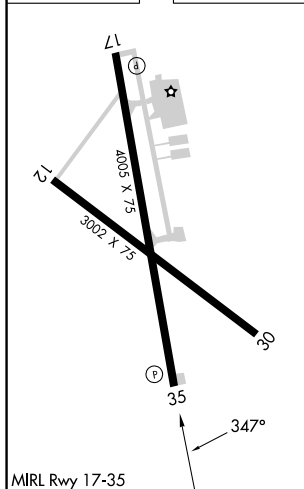
▼ Baro-VNAV and VDP NA when using GGG altimeter setting. For uncompensated
▲ Baro-VNAV systems, LNAV/VNAV NA below -15°C or above 54°C. Rwy 35 helicopter
 visibility reduction below $\frac{3}{4}$ SM NA. Circling Rwy 12, 17 and 30 NA at night. When local
 altimeter setting not received, use GGG altimeter setting and increase LPV DA to 740 feet;
 increase LNAV/VNAV DA to 904 feet and all visibilities $\frac{1}{4}$ SM. Increase all MDAs 60 feet
 and LNAV visibility Cat C $\frac{1}{4}$ SM, and Circling visibility Cat C $\frac{1}{4}$ SM.

MISSED APPROACH: Climb to 900 then climbing left turn to 3000 direct ZIDAV and hold.

AWOS-3 119.375	LONGVIEW APP CON ★ 124.275 257.975	UNICOM 122.8 (CTAF)
--------------------------	--	-------------------------------



ELEV 442		TDZE 442
----------	--	----------



900
3000
ZIDAV

UXDIB
2400

ZIDAV

YOYCU
2.2 NM to RW35

1.1 NM to RW35

1.1 NM

1.1 NM

3.8 NM

6 NM

1180

2400

167°

347°

6000
3000

GP 3.00°
TCH 40

CATEGORY	A	B	C	D
LPV DA	692-1	250 (300-1)		NA
UNAV/ VNAV	856-1½	414 (500-1½)		NA
UNAV MDA	840-1	398 (400-1)	840-1½ 398 (800-1½)	NA
CIRCLING	920-1 478 (500-1)	960-1 518 (600-1)	1200-2¼ 758 (800-2¼)	NA