

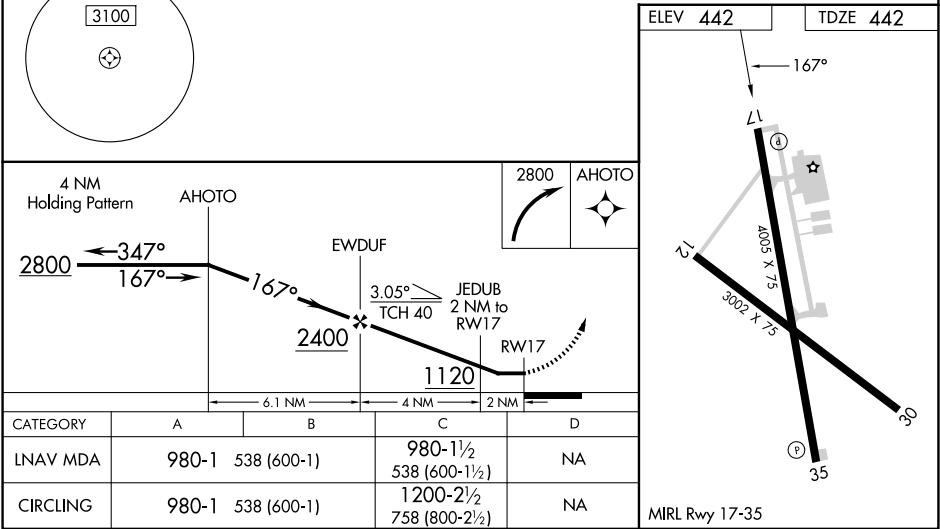
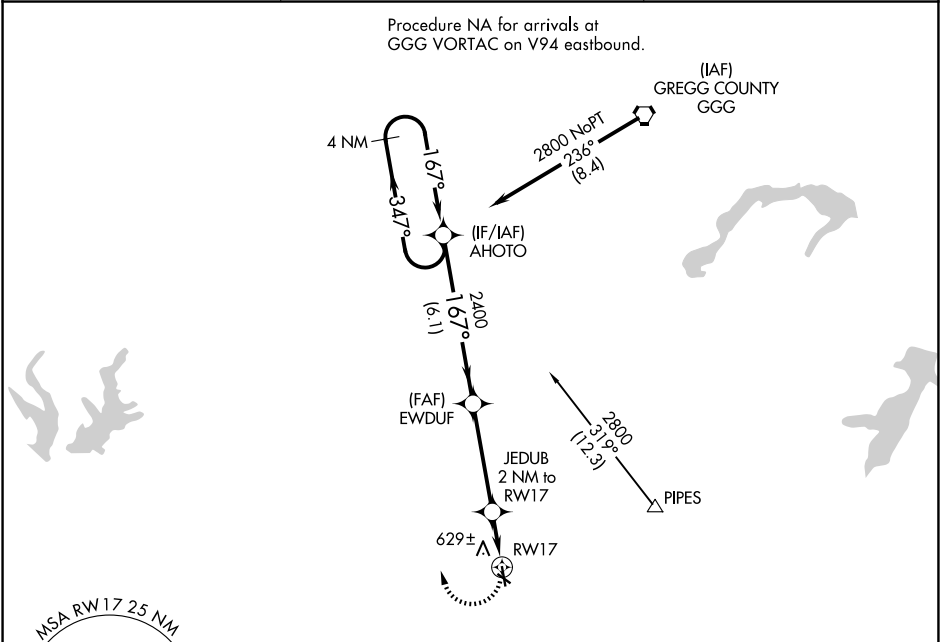
APP CRS	Rwy Ldg	4005
167°	TDZE	442
	Apt Elev	442

RNAV (GPS) RWY 17

RUSK COUNTY (R.F.I)

RNP APCH	MISSED APPROACH: Climbing right turn to 2800 direct AHOTO and hold.
▼ Rwy 17 helicopter visibility reduction below 1 SM NA. When local alimeter setting not received, use Longview alimeter setting and increase all MDA 60 feet.	
▲ Rwy 17 Straight-in minimums NA at night. Circling Rwy 12, 17 and 30 NA at night.	

AWOS-3 119.375	LONGVIEW APP CON★ 124.275 257.975	UNICOM 122.8 (CTAF)
-------------------	--------------------------------------	------------------------



SC-2, 07 AUG 2025 to 04 SEP 2025

SC-2, 07 AUG 2025 to 04 SEP 2025