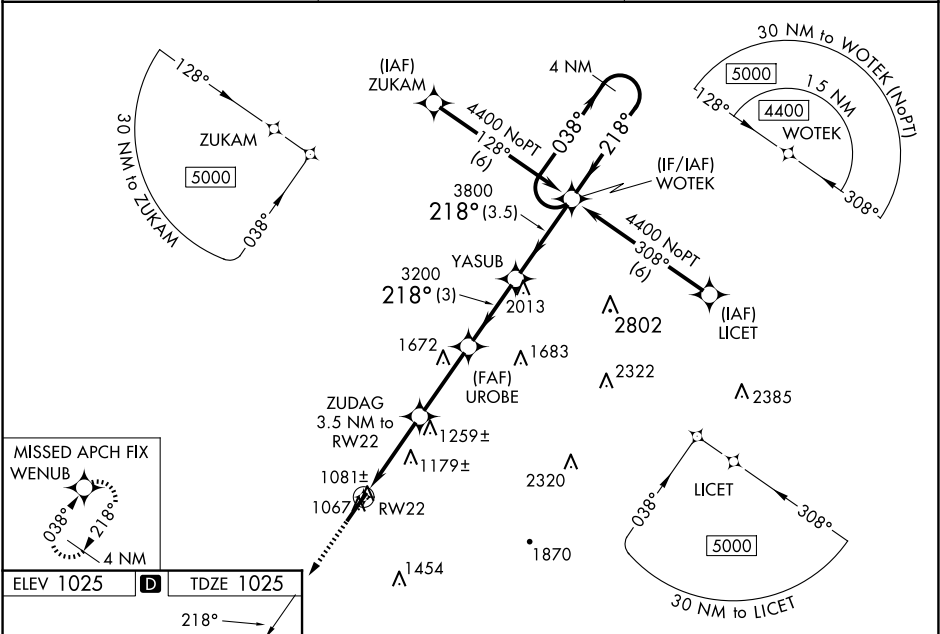


WAAS CH 82311 W22A	APP CRS 218°	Rwy Idg TDZE Apt Elev	6000 1025 1025
--	------------------------	-----------------------------	---

RNAV (GPS) RWY 22
UPPER CUMBERLAND RGNL (SRB)

<p>▼ Baro-VNAV NA when using Crossville altimeter setting. For uncompensated Baro-VNAV systems, LNAV/VNAV NA below -17°C (2°F) or above 54°C (130°F). DME/DME RNP-0.3 NA. When local altimeter setting not received, use Crossville altimeter setting and increase LPV DA to 1447 feet, LNAV/VNAV DA to 1633 feet, increase LPV and LNAV/VNAV visibility ¾ SM. Increase all MDA 180 feet and LNAV Cat C visibility ¼ SM, Cat D visibility ½ SM. Increase Circling Cat C visibility ¾ SM and Circling Cat D visibility ¼ SM. VDP NA when using Crossville altimeter setting.</p>	<p>MISSED APPROACH: Climb to 4000 direct WENUB and hold.</p>
--	---

AWOS-3P 128.25	MEMPHIS CENTER 132.9 290.3	UNICOM 122.975 (CTAF) 0
--------------------------	--------------------------------------	-----------------------------------



5704 x 100

3.00°

55

4000
↑

WENUB

VGSI and RNAV glidepath not coincident
(VGSI Angle 3.00/TCH 25).

WOTEK
4 NM
Holding Pattern

*LNAV only

RW22

*1.2 NM to RW22

ZUDAG 3.5 NM to RW22

UROBE 3200

YASUB

218°

038°

4400

GP 3.00°

TCH 55

CATEGORY	A	B	C	D
LPV DA	1275-¾ 250 (300-¾)			
LNAV/VNAV DA	1461-1½ 436 (500-1½)			
LNAV MDA	1440-1 415 (500-1)	1440-1¼ 415 (500-1¼)		
CIRCLING	1480-1 455 (500-1)	1600-1½ 575 (600-1½)		1880-2¾ 855 (900-2¾)

HIRL Rwy 4-22
REIL Rws 4 and 22
RLS Rwy 4

SE-1, 07 AUG 2025 to 04 SEP 2025

SE-1, 07 AUG 2025 to 04 SEP 2025