

APP CRS  
004°

Rwy Idg  
TDZE  
Apt Elev

3244  
125  
125

RNAV (GPS) RWY 36

WATTS-WOODLAND (O41)

▼

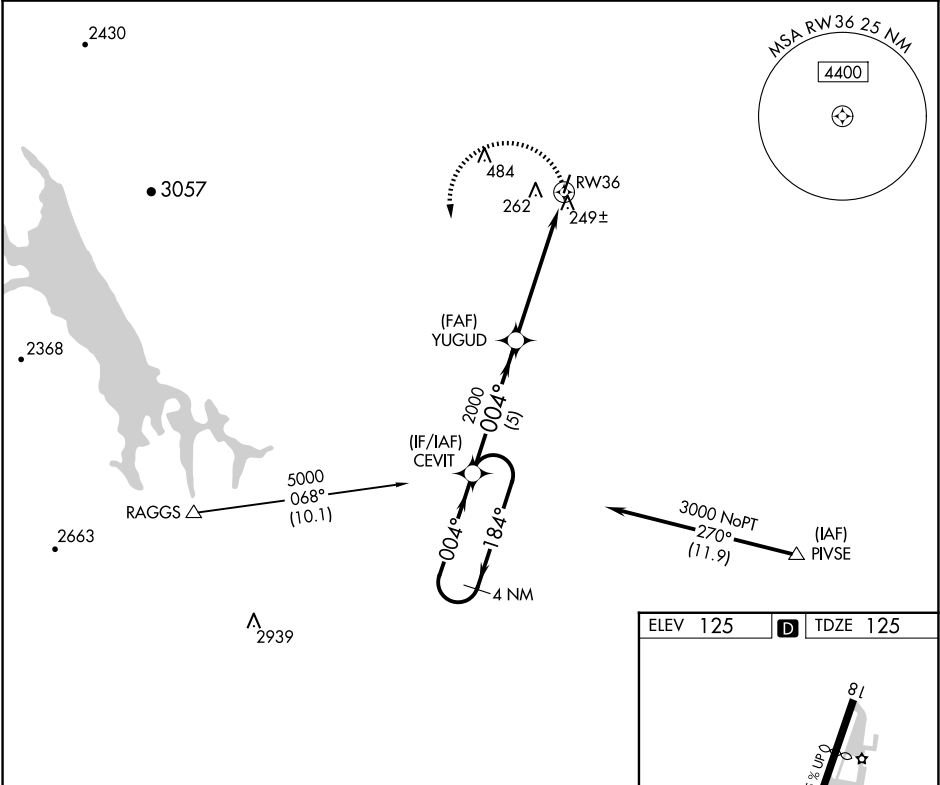
NA

DME/DME RNP- 0.3 NA.  
Procedure NA at night.  
Use Sacramento Intl altimeter setting; when not received,  
use Sacramento Exec altimeter setting and increase all  
MDA 20 feet.

MISSED APPROACH: Climbing left turn to 3000 direct CEVIT  
and hold.

TRAVIS APP CON  
126.6 281.45

UNICOM  
122.8 (CTAF)



4 NM  
Holding Pattern

CEVIT

3000

184°

004°

004°

YUGUD

2000

3.05°

TCH 40

RW36

5 NM

5.7 NM

CATEGORY	A	B	C	D
LNAV MDA	560-1	435 (500-1)	NA	
CIRCLING	620-1	495 (500-1)	NA	

